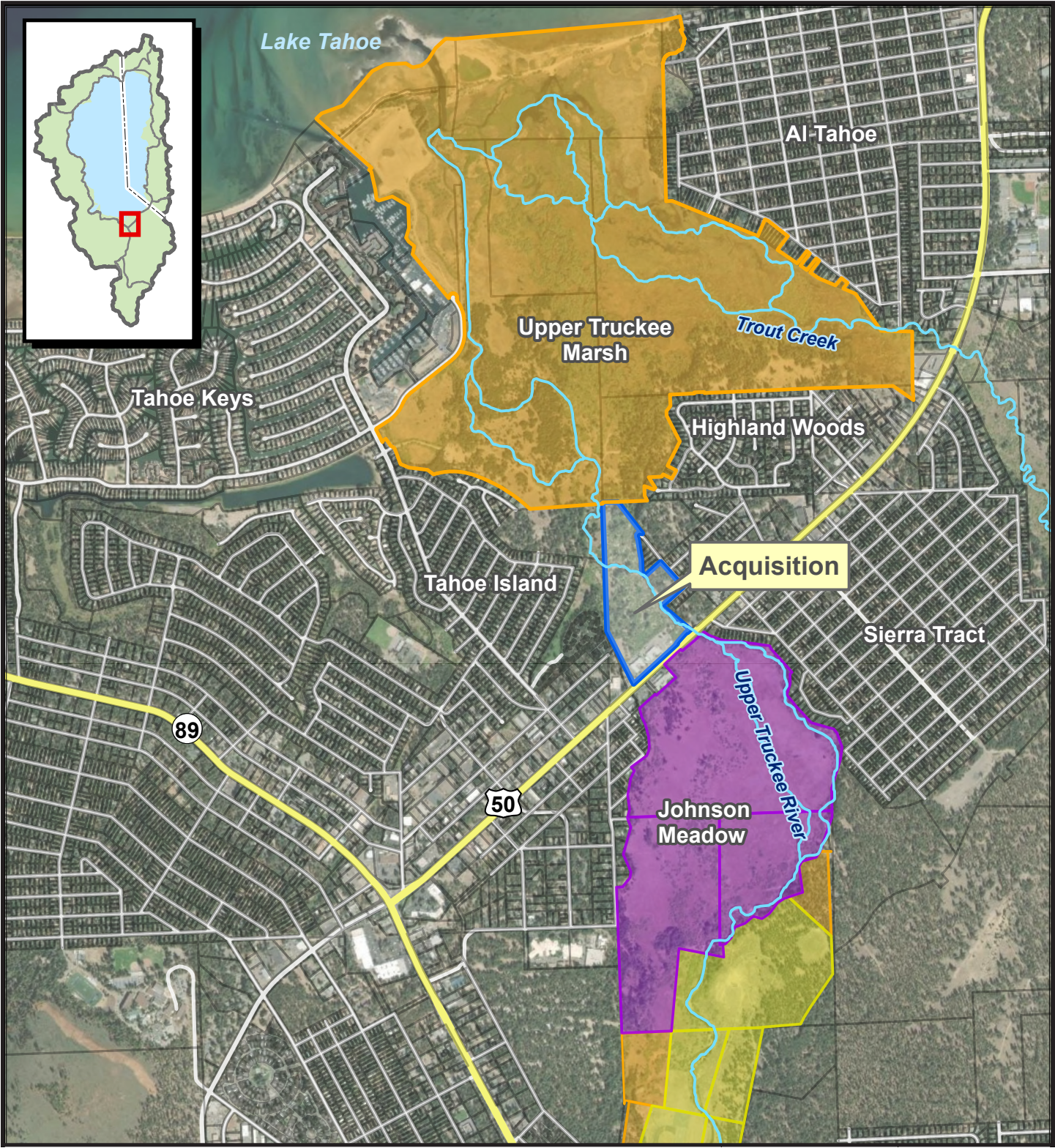
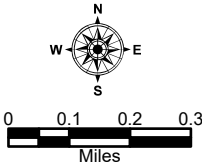


Knox Johnson / Motel 6 Acquisition

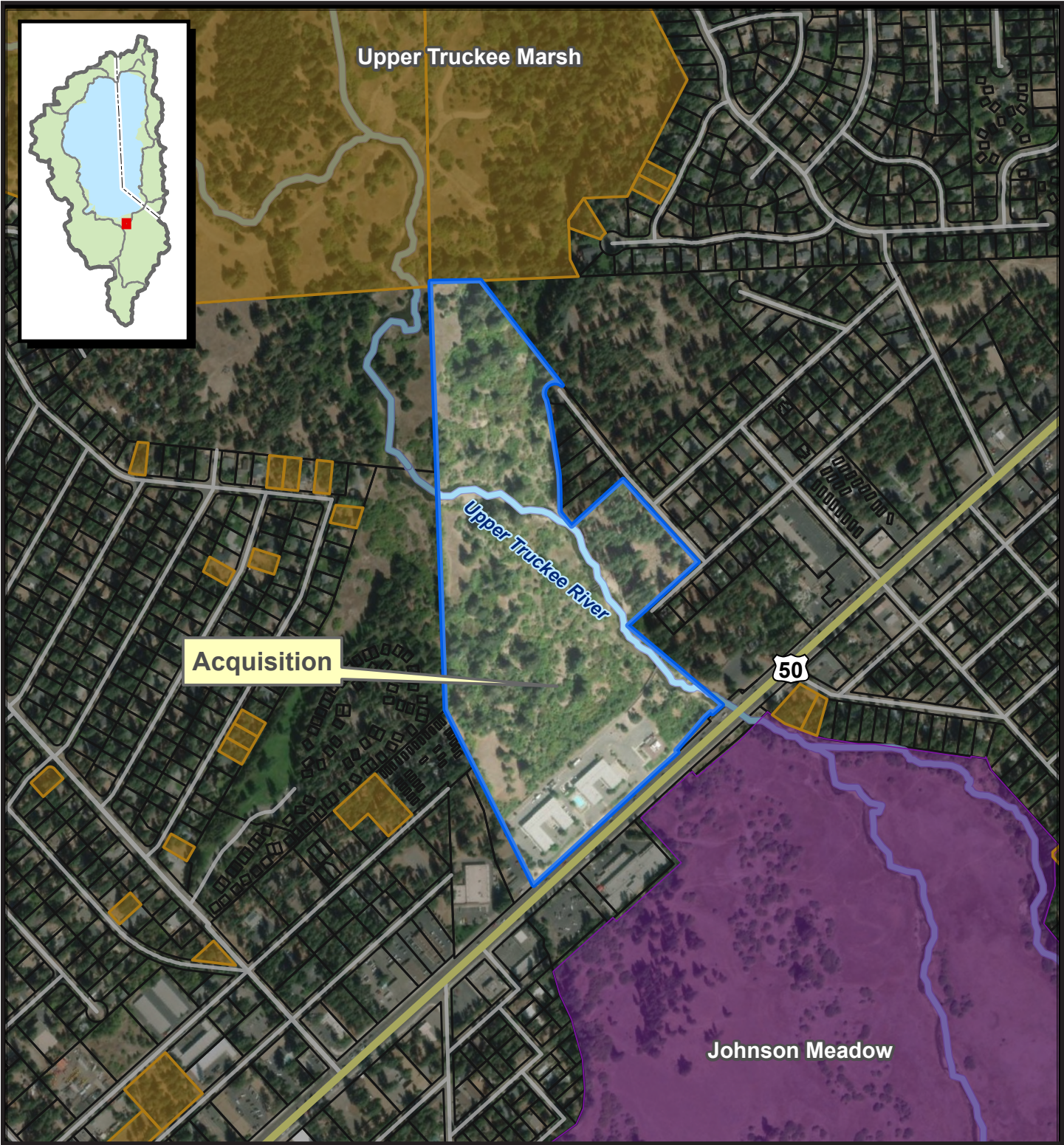
Property Location and Surrounding Protected Lands






- Acquisition
- City of South Lake Tahoe
- California Tahoe Conservancy
- Tahoe Resource Conservation District



Knox Johnson / Motel 6 Acquisition
Property Location



-  Acquisition
-  Other California Tahoe Conservancy lands
-  Johnson Meadow (Tahoe Resource Conservation District)

Sources: California Tahoe Conservancy, Tahoe Regional Planning Agency | 2024

