

ANNUAL REPORT 2022-2023



Powered by Philanthropy



Photo: Douglas DeVore

CONTENTS

Letter from the CEO & Board Chair	1
Board of Directors	4
Mission & Vision	5
Forest Health	7
Lake Clarity	9
Sustainable Recreation	11
Stewardship	13
Transportation	15
Project Map	17
FY 22/23 Projects	19
Access & Inclusion in the Tahoe Basin	23
Events	25
Stewardship Circle Donors	30
Friends of Tahoe Donors	34
East Shore Trail Donors	38
Project Donations	40
Our Partners	44
Financials	45
\$1 for Tahoe Programs	47
Our Sponsors	48

Cover photo: Justin Majeczky

DEAR TAHOE FUND FRIENDS,

WE ARE PROUD TO PRESENT our Fiscal Year 2022-2023 Annual Report. As we reflect on our accomplishments, one thing is clear: the Tahoe Fund is making a bigger impact than ever. Last year, we welcomed almost 60 new Stewardship Circle members. This incredibly supportive community of donors enabled us to grant over \$1.4 million to 52 different projects. These philanthropic dollars helped leverage upwards of \$7 million in public funds.

We celebrated new milestones including the completion of the unprecedented cleanup of Lake Tahoe’s entire shoreline, with scuba divers from Clean Up The Lake removing 25,000 lbs of litter. We invested in Kodama Systems, an innovative company working to automate forest health treatments and find merchantable options for woody biomass. We campaigned to raise over \$100,000 to help our partners build the new Ski Run Community Park for over a thousand kids in South Lake Tahoe. And we committed \$2 million in philanthropic funds for the next eight miles of the iconic East Shore Trail and major safety improvements along State Road 28.

We also deepened our commitment to expand access and inclusion in the Tahoe Basin. To better understand the challenges facing

underserved communities, we commissioned a gap analysis that now serves as a resource for organizations and community leaders working to make a difference. We also provided funding for 13 different projects and programs dedicated to providing outdoor recreation opportunities for all to enjoy.

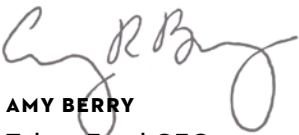
If this past fiscal year is any indication, the Tahoe Fund will continue to tackle some of the most pressing issues facing the Basin today. We are aggressively pursuing solutions that will increase the pace and scale of forest health treatments. We are funding another round of scuba cleanups in litter hotspots around the lake. And we are working with our partners to tackle transportation challenges, make our trails more sustainable, and ensure everyone in our community has access to all the wonders that Tahoe has to offer.

Your support makes this work possible. The Tahoe Fund is powered by your philanthropy.

Yours in gratitude,



CORY RITCHIE
Tahoe Fund Board Chair



AMY BERRY
Tahoe Fund CEO



Photo: Justin Majeczky | 2



BOARD OF DIRECTORS, FY 22/23

CORY RITCHIE, Chair
VERDI DISESA, Vice Chair
JULIE TEEL, Secretary
CHUCK SCHARER, Treasurer

KEVIN MARSHALL
JIM PORTER
BETH TREACY
STEPHANIE TYLER

BOARD MEMBERS

ALLEN BIAGGI
JIM BOYD
RYAN BUNTAIN
TIMOTHY CASHMAN
TODD CHAPMAN
STACEY CROWLEY
BILL DIETZ
PAUL FELTON
CINDY GUSTAFSON
VICKIE HOLTMEIER
DEB HOWARD
JOHN B. JONES, JR.
MATT LEVITT

ADVISORY COUNCIL

ART CHAPMAN
STEVEN MERRILL
GOVERNOR BRIAN SANDOVAL
PATRICK WRIGHT

SPECIAL COUNCIL OF ADVISORS

DOMINIQUE ETCHEGOYHEN
NV Representative
JULIE REGAN
TRPA Representative
JASON VASQUES
CA Representative
ERICK WALKER
USFS Representative

WHO WE ARE

THE TAHOE FUND is the first and only nonprofit dedicated to supporting environmental projects in the region. Together with local, state, federal partners and other non-profit organizations, we play many roles in the Tahoe Basin.

Funder

We fund environmental improvement projects through private donations.

Convener

We convene key stakeholders to facilitate dialogue and problem solving. We add value by being neutral, inclusive and innovative.

Catalyst

We are a catalyst for basinwide projects and early efforts when there is a need to assist and build momentum. We are sometimes in a visible leadership position, but more often than not, we provide the support needed to bring projects to fruition.

Advocate

We advocate for public funding and strategic policy changes which advance our mission and the goals in this plan.

Spokesperson

We build awareness for the stewardship and care of the Tahoe Basin with residents and visitors.



OUR FOCUS AREAS

Forest Health

\$20M+

DONOR
DOLLARS
RAISED

30+

AGENCY &
ORGANIZATION
PARTNERS

Lake Clarity

\$80M+

PUBLIC
FUNDING
SECURED

130+

PROJECTS
FUNDED

Sustainable
Recreation

Stewardship

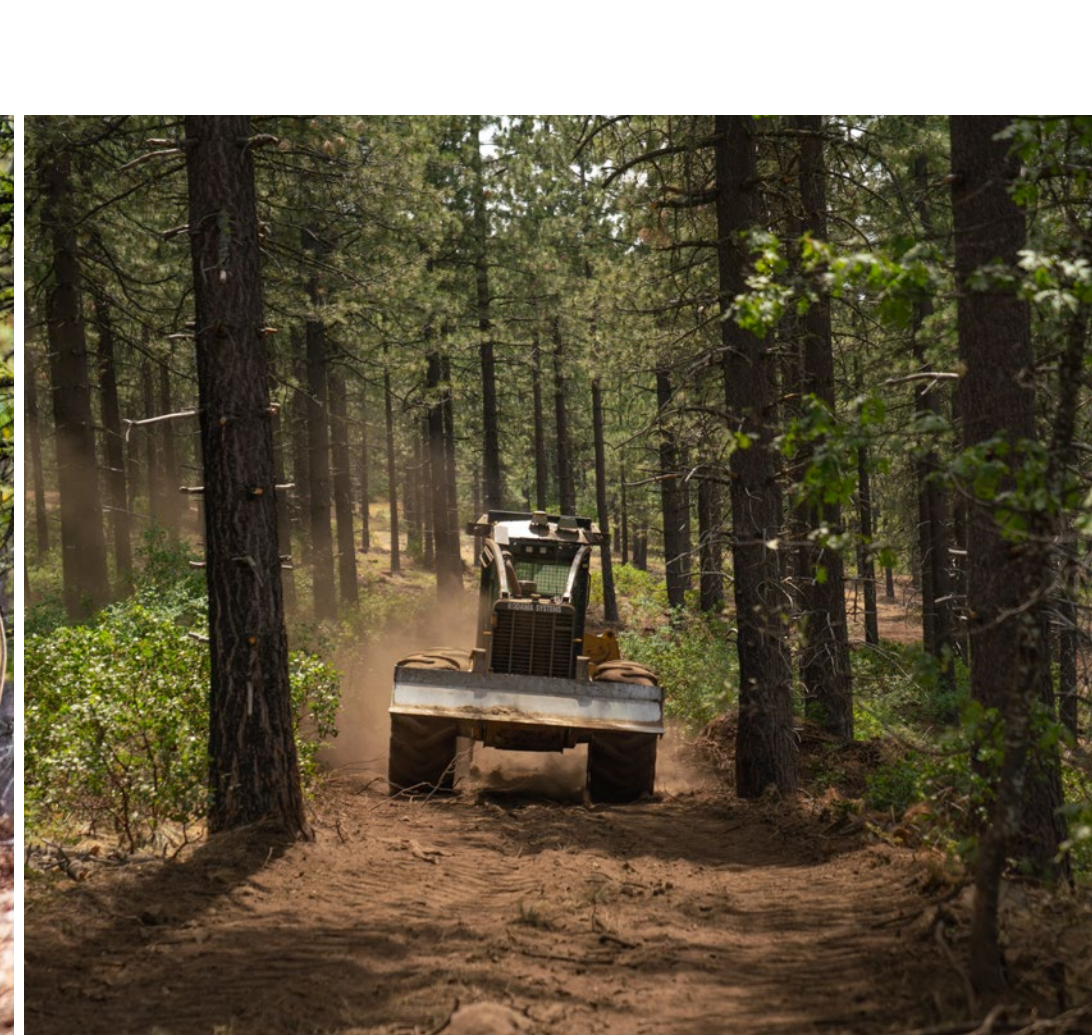
Transportation

WHAT WE BELIEVE

We envision a Lake Tahoe where the natural and human environments are in balance and a growing community of passionate supporters enjoys and cherishes this mountain treasure.



FOREST HEALTH



ACCORDING TO A REPORT from Land Tender, the Tahoe Basin has 22 million more trees than a healthy forest should. With this significant overcrowding putting the region at risk of catastrophic wildfire, the Tahoe Fund has made forest health our number one priority. Through our Smartest Forest Fund, we invest in burgeoning technologies, promising new ideas, and shovel-ready pilot projects that help increase the pace and scale of forest restoration work.

BY THE NUMBERS, FY 22/23

19%	OF TOTAL PROJECTS
\$162,661	TOTAL AMOUNT GRANTED FOR PROJECTS
\$3,584,132	PUBLIC FUNDS UNLOCKED

PROJECT SPOTLIGHT: KODAMA SYSTEMS

The Future of Forest Health Treatments

KODAMA SYSTEMS is changing the way that forest health treatments are getting done. By automating machinery, Kodama is helping crews work faster and safer. Kodama is also creating merchantable opportunities for woody biomass that might otherwise be piled on the forest floor for months or years before it is burned.

This year, the Tahoe Fund made its first ever investment, joining Kodama Systems' \$5.95 million seed round alongside two environmentally-focused venture capital firms, Breakthrough Energy Ventures and Congruent Ventures. The Tahoe Fund's early support of Kodama also helped the company secure a \$300,000 Cal Fire grant to retrofit key machinery for teleoperation.



LAKE CLARITY

EXTERNAL STRESSORS like aquatic invasive species, algae, and wildfires are creating new challenges for improving clarity, water quality, and overall lake health. The Tahoe Fund is working closely with agencies and organizations to fund projects that positively impact the health of Tahoe's famous blue waters, including aquatic invasive species removal, watershed restoration, and scuba cleanups.

BY THE NUMBERS, FY 22/23

13%	OF TOTAL PROJECTS
\$171,850	TOTAL AMOUNT GRANTED FOR PROJECTS
\$101,002	PUBLIC FUNDS UNLOCKED



PROJECT SPOTLIGHT: 72-MILE SCUBA CLEANUP

Historic Cleanup Removes 25,000 lbs of Litter From Lake Tahoe

IN THE SPRING OF 2021, Clean Up The Lake's scuba dive team embarked on an extraordinary effort to recover submerged litter around all 72 miles of Lake Tahoe's shoreline. As divers circumnavigated the lake, they removed everything from plastic bottles and cans to engagement rings, 1980s Nikon film cameras, lamp posts, lost wallets, cordless home telephones, and more. One year later, the dive team completed the project,

collecting 24,797 pieces of litter, for a total weight of 25,281 pounds.

This unprecedented cleanup was made possible by a \$100,000 matching donation from Tahoe Blue Vodka, contributions from more than 135 Tahoe Fund donors including Vail Resorts, the Nevada Division of State Lands' Lake Tahoe License Plate program, and other local grant giving foundations.

SUSTAINABLE RECREATION

INCREASED VISITATION to the Tahoe Basin impacts natural resources and recreation opportunities alike. Alongside land managers and trail partners, the Tahoe Fund is working to support an accessible trail system that offers a high quality experience for all people, including those with physical disabilities. To ensure this trail system is sustainable and to minimize the impacts of overuse, we also fund annual trail work through our Tahoe Trails Endowment.

BY THE NUMBERS, FY 22/23

25%	OF TOTAL PROJECTS
\$385,886	TOTAL AMOUNT GRANTED FOR PROJECTS
\$416,040	PUBLIC FUNDS UNLOCKED

PROJECT SPOTLIGHT: UPPER TYROLIAN TRAIL

Old Logging Roads Become New Singletrack Trail

A STRETCH OF OLD, unused logging roads above Incline Village has been transformed into nearly two miles of sustainable singletrack now known as the Upper Tyrolian Trail. This new section of trail connects Tahoe Meadows off Mount Rose Highway to the existing Tyrolian Downhill Trail and reduces mountain bike traffic on the busy Tahoe Rim Trail.

The project was spearheaded by the Tahoe Area Mountain Bike Association (TAMBA), with a \$60,000 grant from the Tahoe Fund. The U.S. Forest Service and Sensus R.A.D. Trails, a trail building nonprofit by local freeride mountain bike athlete Cam Zink, helped bring the new trail to life. Its completion was celebrated in the fall of 2022 by the volunteers, supporters and donors who made it possible.



STEWARDSHIP



EVERYONE has a role to play in taking care of Tahoe. Together with over 50 partners throughout the Basin, the Tahoe Fund is working to help build a culture of caretaking for Tahoe's environment. We are also supporting programs that expand access and create accessibility, especially for people from underserved communities.

BY THE NUMBERS, FY 22/23

34%	OF TOTAL PROJECTS
\$560,653	TOTAL AMOUNT GRANTED FOR PROJECTS
\$612,026	PUBLIC FUNDS UNLOCKED

PROJECT SPOTLIGHT: GATEWAY MOUNTAIN CENTER'S YEA! CAMPS

Young People Overcome Adversity Through Nature Experiences

FEELING WELCOME in the outdoors is not a given for all young people in the Tahoe Basin. Gateway Mountain Center's Youth Ecology and Adventure (YEA!) Camps are a free program for high-risk Tahoe youth to help them overcome adversity and develop crucial life skills such as adaptability, communication, and empowerment through outdoor adventure and mindfulness lessons.

These camps help young people build a strong connection to themselves, their community and the natural world, all while learning how to become environmental stewards. With a \$60,000 grant from the Tahoe Fund, YEA! Camps serve kids in under-resourced communities in North and South Lake Tahoe.

TRANSPORTATION

MORE THAN 50 million vehicle trips are made to, from and around the Lake Tahoe Basin annually. With so many agencies already working diligently on transportation solutions for this incredibly high volume of cars, the Tahoe Fund is focused on bringing innovation to the table and leveraging private funding.

BY THE NUMBERS, FY 22/23

11% OF TOTAL PROJECTS

\$132,613 TOTAL AMOUNT GRANTED FOR PROJECTS

\$4,622,166 PUBLIC FUNDS UNLOCKED

PROJECT SPOTLIGHT: EAST SHORE TRAIL EXPANSION

New Transit Options Coming to Tahoe’s East Shore

SPOONER SUMMIT is not only a major entry point to Lake Tahoe, it’s also the bookend to one of the most popular recreation and scenic areas along State Route 28. Each year, more than two million vehicles travel through this corridor and over one million people come to play on Tahoe’s East Shore.

Our partners at the Tahoe Transportation District, Nevada Department of Transportation, and U.S. Forest Service are working to add

eight more miles to the popular Tahoe East Shore Trail, which means it will extend from Sand Harbor all the way to Spooner Summit. This next phase of work will begin with new parking lots at the Northern Trailhead and at Chimney Beach. It will also add safety improvements, new parking options, and transit stops to make it easier for users to access the trail easily and safely. The Tahoe Fund, a founding partner of the East Shore Trail, has committed \$2 million in philanthropic funds to the project.



OUR PROJECTS BY REGION

WEST SHORE

13 TOTAL
PROJECTS

BASIN WIDE

39 TOTAL
PROJECTS

NORTH LAKE TAHOE

17 TOTAL
PROJECTS

EAST SHORE

07 TOTAL
PROJECTS

SOUTH LAKE TAHOE

25 TOTAL
PROJECTS

NORTH LAKE TAHOE

- Beaver Tail Trail
- Forest Fire Exhibit
- Incline Education Fund Trash to Treasure
- Incline Flume Trail
- Lakeside Bike Trail
- Lake Tahoe Waterman Foundation Accessibility Mat
- North Tahoe Boys & Girls Club Bikes
- SOS Outreach
- Tahoe City Aquatic Invasive Weed Removal
- Tahoe Meadows Accessibility Ramp
- Tahoe Nordic Search & Rescue
- Tahoe XC Center Interpretive Signs
- TART Connect
- TCPUD Solar Powered Waste Compactors
- Third & Incline Creek Watershed
- UC Davis Sugar Pine Restoration
- Upper Tyrolian Trail Restoration

EAST SHORE

- Camp Wamp Field Trips
- East Shore Trail Parking Expansion
- Nevada Nordic Grooming
- Sand Harbor Beach Improvements
- Spooner Lake Amphitheater
- Tahoe East Shore Trail
- Tunnel Creek Singletrack Trail

SOUTH LAKE TAHOE

- Angora Creek Bridge Replacement
- Big Meadow Trail Improvements
- Boys & Girls Club Climbing
- Caldor Fire Trails Restoration Fund
- Douglas County Sheriff Swift Water Rescue
- Elk Point Bubble Curtain
- Johnson Meadow Acquisition
- Johnson Meadow Restoration & Interpretive Panels

- Lake Tahoe Community College Forestry Program
- Lake Tahoe Wildlife Care Center
- Lily Lake Trail
- Peregrine Falcon Monitoring
- Post-Caldor Fire Fuel Treatment Research
- Rabe Meadow Bike Path
- Ski Run Aquatic Invasive Weed Removal
- Ski Run Community Park
- South Tahoe Boys & Girls Club Bikes
- Surfaced Art Sculpture
- Taylor Creek Overlook
- Taylor Creek Trilingual Audio Tour
- Taylor Creek Visitor Center Interpretive Trail Improvements
- Taylor Tallac AIS Control
- Upper Truckee River Restoration Planning
- UV Light Pilot Project
- Van Sickle Bi-State Park

WEST SHORE

- Blackwood Creek & Eagle Rock Trail Restoration
- Desolation Trail Restoration
- Dollar Creek Bike Path
- Echo Lakes Trail Restoration
- Electric Boat Charging Station
- Emerald Bay AIS Plant Removal
- Emerald Bay Asian Clam Control
- Emerald Bay to Stanford Rock Trail
- Emerald Fire Restoration
- Lost Lake Trail & General Creek Trail Restoration
- Meeks Ridge Trail
- Rubicon Trail & Lighthouse Improvements
- West Shore Bike Trail

BASINWIDE

- 72-Mile Scuba Cleanup & Hotspots
- Achieve Tahoe Summer Programs

- Acoustic Owl Monitoring
- Adventure Risk Challenge
- Aquatic Invasive Bottom Barrier Challenge
- Basin Bike Racks
- Bike Coalition Map & Safety Equipment
- Caldor Fire Lake Clarity Study
- California Forest Observatory
- Clean Tahoe
- Destination Stewardship Plan
- Drink Tahoe Tap Water Refill Stations
- Gateway Mountain Center YEA! Camps
- Generation Green
- Hasty Search & Rescue
- Increasing Access on the Tahoe Rim Trail
- Kodama Systems
- Lake Tahoe Shoreview Map
- Land Tender
- Parking Enforcement Planning
- Restoring the Lake Depths ROV
- Shane McConkey Eco-Challenge
- Stories in the Snow
- Sugar Pine Plantings
- Tahoe Backcountry Alliance Washoe Tribe: Winter Recreation
- Tahoe Fire & Fuels Team Workshop
- Tahoe Forest Products Sawmill
- Tahoe In Depth
- Tahoe Regional Trails Strategy
- Tahoe Rim Trail Association Youth Backpacking Program
- Tahoe Rim Trail Crew
- Tahoe Trails Endowment
- Take Care Ambassadors
- Take Care Campaign
- TAMBA Trail Crew
- TINS Tahoe's Nature For All
- UC Davis Lake Monitoring
- UC Davis State of the Lake Report
- Wildfire Vulnerable Populations Research

THIS YEAR'S PROJECTS



Lake Tahoe Community College's Forestry Program

FOREST HEALTH

■ Tahoe Fire & Fuels Team Social Science Workshop

A workshop co-hosted with NV Energy featuring U.S. Forest Service social scientist Dr. Sarah McCaffery. The event drew 75 Tahoe fire professionals, with whom McCaffery shared her cutting-edge research about how best to engage with communities around wildfire.

■ Lake Tahoe Community College (LTCC) Forestry Program ★

Scholarships for every student in the inaugural year of LTCC's Forestry Education & Job Placement Program, along with a grant to match public funds to hire a new administrator to ensure student success.

■ Wildfire Vulnerable Populations Research ★

A multilingual and multi-faceted research effort to understand how best to assist Tahoe's most

vulnerable residents in preparing themselves and their homes for wildfire. Findings will be included in Tahoe's new Community Wildfire Protection Plan, and steer future wildfire preparedness grantmaking.

■ Kodama Systems

The Tahoe Fund's first-ever investment, Kodama is working to automate forest health treatments and find merchantable options for woody biomass.

■ Caldor Forest Treatment Study

A study to determine how different forest health treatments near South Lake Tahoe impacted the spread and intensity of the Caldor Fire.

■ Tahoe Forest Products (TFP) Sawmill

We brought together the Washoe Tribe and TFP to build the region's first new sawmill in decades, which will process 40-50 million board feet of timber per year, providing a badly-needed offtake solution for material from forest health treatments in the Basin and surrounding area.

STEWARDSHIP

■ Achieve Tahoe Adaptive Outdoor Recreation Summer Program ★

This program offers summer activities such as archery, climbing, hiking, paddling and sailing for people with disabilities and their families.

■ Adventure Risk Challenge (ARC) Community Leadership Program ★

A year-long program empowering underserved high school students through outdoor education and leadership development.

■ Boys & Girls Club Lake Tahoe Climbing Program ★

A six-week program that teaches young people how to rock climb at Blue Granite Climbing Gym in South Lake Tahoe.

■ Generation Green Summer Internship ★

An eight-week work-study program with the U.S. Forest Service for local high school students that provides career experience while fostering a love of the outdoors.

■ Incline Education Fund: Trash to Treasure

A series of trash cleanups conducted by students, local service groups and community members. The litter collected will be turned into art pieces to remind the public about the importance of taking care of Tahoe.

■ Lake Tahoe Destination Stewardship Plan

A new plan for tourism and outdoor recreation developed by more than a dozen partners that will balance the needs of the environment, businesses, visitors, and local communities.

■ McConkey Eco-Challenge

A student competition designed to inspire and engage the next generation to help solve the region's environmental challenges.

■ SOS Outreach ★

This youth mentorship program brings outdoor recreation opportunities to underserved youth in North and South Lake Tahoe.

■ Surfaced Art Sculpture

An art sculpture created from litter removed by scuba divers during the 72-mile lake cleanup. The sculpture has been installed outside of the new Tahoe Blue Event Center in South Lake Tahoe.



Adventure Risk Challenge Community Leadership Program

■ Tahoe Backcountry Alliance (TBA) Winter Recreation for Washoe Youth ★

New cross country skis and snowshoes for TBA's winter recreation programs serving Washoe Tribe youth.

■ Tahoe In Depth

An environmental newspaper published by the Tahoe Regional Planning Agency.

■ Take Care Tahoe

New signage and billboards on highways leading into the Basin reminding people to take care of Tahoe.

■ Take Care Tahoe Ambassadors

Take Care Tahoe ambassadors spread stewardship messages at high-use recreation sites during the summer.

■ Tahoe Institute for Natural Sciences (TINS) Nature for All Program ★

Free nature experiences for underserved communities, including young people struggling with mental health issues, survivors of domestic abuse, and low-income families.

★ Projects focused on access and inclusivity

SUSTAINABLE RECREATION

- **Big Meadow Trail Improvements & Realignment**
Relocation of the Big Meadow trailhead by the Tahoe Rim Trail Association (TRTA) to create a safer highway crossing.
- **Caldor Trails Restoration**
An effort by the Tahoe Area Mountain Biking Association (TAMBA) to rebuild and restore trails that were damaged during the Caldor Fire.
- **Improving Accessibility at Tahoe Meadows ★**
Planning is underway for the new Tahoe Meadows Interpretive Trail, a 1.3-mile loop that would be the first ADA and ABA compliant trail in the Tahoe Rim Trail system.
- **Incline Flume Trail**
Crews installed the final bridge on the Incline Flume Trail, which will complete a multi-year restoration effort.
- **Increasing Access on the Tahoe Rim Trail ★**
Inclusive resources throughout the Tahoe Rim Trail system, including trailside information and stories in multiple languages, along with free outdoor programming for underserved and under-represented members of the Tahoe community.



TART Connect Shuttle Service

- **Meeks Ridge Trail**
A new 4.5-mile trail connecting Meeks Bay to the Lost Lake Trail, creating a 10-mile loop on the west shore for hikers and bikers.
- **Nevada Nordic Grooming**
Grooming for over 19 km of winter recreation trails that are free to the community.
- **Ski Run Community Park ★**
A new community park for over 1,000 kids in the Ski Run neighborhood of South Lake Tahoe.
- **Spooner Lake State Park Upgrades**
A new visitors center and amphitheater at Spooner Lake State Park that will serve 150,000 annual visitors.
- **Trail Crew Funding**
Support for TAMBA’s professional trail crew and TRTA’s trail maintenance throughout the region.
- **Upper Tyrolian Trail Reconstruction**
A new trail that connects Tahoe Meadows to the start of Tyrolian Downhill, featuring banked turns, jumps and beautiful singletrack where an eroding fire road once existed.

TRANSPORTATION

- **Tahoe Truckee Area Regional Transportation (TART) Connect**
A free, on-demand, door-to-door shuttle service in Tahoe’s north shore communities.
- **Parking Enforcement Study**
A collaborative effort among 20-plus organizations to develop a regional parking enforcement strategy that would alleviate dangerous on-highway parking and congestion.
- **Lake Tahoe Bicycle Coalition ★**
Basinwide programs that provide free bikes and bike safety gear to residents in need.
- **East Shore Trail Expansion**
Planning is underway for the next phase of the trail, from Sand Harbor to Spooner Summit. This includes transit solutions and parking improvements.



Ski Run Community Park designs by local elementary school kids

LAKE CLARITY

- **72-Mile Cleanup & Hotspots**
Scuba divers from Clean Up the Lake completed the historic 72-mile cleanup of Lake Tahoe’s shoreline, collecting 25,000 lbs of litter. Divers are back in the water removing more debris from hotspots.
- **EarthViews Nearshore Mapping**
The first-ever “street view” style map of all 72 miles of Lake Tahoe’s shoreline, along with thousands of nearshore water quality data points.
- **Emerald Bay Aquatic Invasive Species Removal**
A collaboration with TRPA to remove a Eurasian watermilfoil infestation in Emerald Bay.
- **State of the Lake Report**
An annual report from the UC Davis Tahoe Environmental Research Center that tracks short- and long-term clarity trends in Lake Tahoe.
- **Deepwater Remote Operated Vehicle (ROV)**
An unmanned ROV that can reach the bottom of Lake Tahoe, collect trash and debris, and live stream the process in high-definition.

★ Projects focused on access and inclusivity

ACCESS AND INCLUSION IN THE TAHOE BASIN



MAKING AN IMPACT

Together with our partners, the Tahoe Fund is working to expand access and build more inclusion in the Tahoe Basin. In the last fiscal year, we funded 13 projects focused on this effort, some of which are highlighted below.

Expanding Recreation Opportunities

Physical and cultural barriers can make it challenging for underserved communities to participate in outdoor recreation activities in Lake Tahoe. Organizations like Achieve Tahoe provide affordable programs in archery, hiking, paddle sports and sailing for people with disabilities and their families.

Improving Interpretive Signage & Wayfinding

Much of the existing signage on trails in Tahoe is only available in English, making wayfinding difficult for non-English speakers. The Tahoe Rim Trail Association has created new signage, maps, and brochures in Spanish to help make the 175 miles of the Tahoe Rim Trail system more accessible to Latino communities.

Supporting More Equitable Transportation

For many low-income residents in the Tahoe Basin, public transit is the only way to get to work, school or community services. Many of the free transit options do not connect residents to beaches, trails, or resorts. TART Connect provides free, on-demand, curb-to-curb rides, creating an affordable and reliable solution for people in need.

Focusing on Cultural Storytelling

Lake Tahoe is the ancestral home of the Waš-šiw (Washoe people - the people from here). However, there are many places around Lake Tahoe that do not have signage or recognition of Washoe people and their history. The National Forest Foundation created a trilingual audio tour of Taylor Creek that provides a guided experience on the natural and historic elements of the land. The tour is available in Washoe, Spanish, and English.

AT THE TAHOE FUND, our mission is to use the power of philanthropy to improve the Lake Tahoe environment for all to enjoy. To better understand the challenges and opportunities to fulfill our mission, we commissioned a gap analysis on access and inclusion within the Tahoe Basin.

As part of this gap analysis, Point b(e) Strategies held interviews with over twenty

of our grantees, partners, and community leaders in Kings Beach, Incline Village, South Lake Tahoe and Truckee. These conversations raised some important barriers experienced by underserved communities in Tahoe, including cost of living, access to recreation, lack of diversity and inadequate transportation systems.

EVENT

2022 LAKE TAHOE SUMMIT



THE 26TH ANNUAL LAKE TAHOE SUMMIT, hosted by U.S. Senator Jacky Rosen, was held on August 16, 2022. The Tahoe Fund was the organizing sponsor of the event, which brings together elected officials, government agencies, the private sector, and local community leaders to address environmental challenges facing the Tahoe Basin. White House National Climate Advisor Gina McCarthy was the keynote speaker.



On the eve of the summit, supporters of the Tahoe Fund gathered to hear directly from key officials including US Senator Jacky Rosen, Nevada Governor Steve Sisolak, and Secretary Wade Crowfoot. The event was sponsored by NV Energy and featured wines from axr Napa Valley.

EVENT

3RD ANNUAL BOAT PARADE



ON SUNDAY, JUNE 26, 2022, more than 350 supporters and friends gathered for the Tahoe Fund's 3rd Annual Boat Parade. Over 50 boats, kayaks, paddleboards and efoils joined in the party to kick off the summer season.

The celebration featured breakfast burritos from the West Shore Café, charcuterie boards from Raley's, and more than 90 bags of Wet Woodys. A special thanks to our sponsors at JP Morgan, Tahoe Luxury Properties, and the Robert S. & Dorothy J. Keyser Foundation.



EVENT

2022 FOUNDERS
CIRCLE SUMMER
CELEBRATION

THE TAHOE FUND HOSTED its annual Founders Circle Summer Celebration on the beach at Sand Harbor State Park on Thursday, July 28, 2022. Over 300 guests enjoyed lakefront cocktails featuring PlumpJack Wines and Tahoe Blue Vodka, a gourmet dining experience on the beach, and dancing the night away to New Wave Crave.

Our wonderful supporters demonstrated the power of philanthropy, helping to raise critical funds to improve the Lake Tahoe environment for all to enjoy. The night would not have been possible without our generous title sponsors, Barton Health and Tahoe Forest Health System, as well as Tahoe Luxury Properties and Vail Resorts.



EVENT

FOREST HEALTH
BRIEFING

ON DECEMBER 3, 2022, the Tahoe Fund held its annual Forest Health Briefing, sponsored by J.P. Morgan. Over 70 supporters and partners gathered at the West Shore Café to hear from presenters and panelists about what can be done to restore Tahoe's forests to health and protect habitat, life and economy from catastrophic wildfire.

From innovative solutions like using artificial intelligence to plan forest health treatments, to the creation of a new sawmill to serve as an offtake site for tens of thousands of dead, dying or overcrowded trees, our project partners highlighted how they are making our forests healthier and our community more resilient to wildfire.



STEWARDSHIP CIRCLE DONORS

THE STEWARDSHIP CIRCLE CAMPAIGN is designed to help inspire, motivate, and empower stewardship of our important national treasure. Donors can join the Stewardship Circle with a multi-year commitment of at least \$2,500 a year for 3 years.

Stewardship Circle members are a distinguished group of leadership donors made up of individuals, foundations and corporations helping us to restore and enhance the Tahoe environment. Thank you to our Stewardship Circle donors!

DOUBLE PLATINUM \$50,000 X3

Anonymous
Ron and Maureen Ashley*
Blum Family Foundation*
David Doyle
Peter Haas, Jr.
and Ginnie Haas;
The San Francisco Foundation*
The Sandra and Steven
Hardie Fund; Parasol Tahoe
Community Foundation*
Peter and
Mary Beth Oppenheimer

PLATINUM-\$25,000 X3

Dan Haas in Memory
of Joanne Haas;
Marin Community Foundation*
Hazel Foundation*
Ryan and Erin Kerrigan
The Mathman Family
Kevin and Sheri Marshall*
Palisades Tahoe*
Julie and Mike Teel*
Vail Resorts*

GOLD-\$10,000 X3

Duane and Becky Andrews
Gordon and Michele Brown*
George and Sue Bull*
Coldwell Banker Select on
Behalf of Dan Jacuzzi*
Donald and
Carole Chaiken Foundation

Todd and Erika Chapman*
David Contis and
Sandra Cath*
The Duda Family Foundation
Charles and Gina Eggert
Wes and Cindy Ferguson*
Janie and Donny Friend;
Jewish Community Federation*
Klaus and Kristin Grimm;
Community Foundation
of Western Nevada
Peter and Catherine Hoose
Eric Havian and Jean
Jarvis; The San Francisco
Foundation*

Ronald and Jane Jenny
Robert S and
Dorothy J. Keyser Foundation
Jonathan and Sally King*
Jeff and Erin Lager
Esther and Gerry Levandoski*
Bradley and Lisa Mindlin
Dan Robert Osborne Trust*
Jason and Cherity Payne
Bob and Cindy Pester
Art and Katherine Pope*
Kimberly and Patrick Popovits
Anne and Marty Putnam*
Kent and Trixie Putnam*
James and Amy Ramsey*
Jon Reynolds
Ritz-Carlton, Lake Tahoe
Rachel Schindler
and Dan Woodman

Ken Schultz and Kelly Miller
Serendipity Fund;
Parasol Tahoe
Community Foundation*
Woody and Denise Shackleton
Matt and Kathy Shieman
Steve and Betsy Young*

SILVER-\$5,000 X3

Anonymous
Anonymous
Robin Albee-Kesich
and Fred Kesich *
Sigmund and Susan Anderman
AT&T*
Charles Baxter and Jinee Tao
Walter and Estel Binder*
Nancy Binz
Paul Boschetto in Honor
of Cindy Pester*
Steven and Renee Bouck*
Patrick and Cathleen Brady
Greta and Nicholas Brown*
Camp Richardson Resort;
Bob and Tammy Hassett*
Shawn Cardinal and
Thomas Jingoli
Denise Cashman*
Tim Cashman*
Victor and Debbie Castello*
Robert Chester and
Jennifer Trask*

Richard and Theresa Crocker;
Santa Cruz County Community
Foundation

Nancy and Chris Connery

Tim and Stacey Crowley*

Todd Davidson*

Douglas and Wendy DeVore

Bill and Kelly Dietz

Gately Foundation

Steven and Lisa Gonzales

Jason and Melissa Green Fund;
Parasol Tahoe Community
Foundation

Paul Grinberg and
Stephanie Katleman

Hard Rock Hotel, Lake Tahoe

Michael and
Mary Ann Hasenstab

Jan and David Hardie in Honor
of Cory Ritchie; Parasol Tahoe
Community Foundation*

Sara and Larry Hillman

Beth and Kevin Hirsh;
Virginia B. Hirsh Foundation

Carol and David Jeske

John and Glennis Jones*

Raj Karwa and
John Benediktsson

Kevin and Rebecca Kassekert
in honor of Garrett Hartman*

Jim and Nancy Kennedy*

Scott and Kathy Kiever

Steve and Dee Klein

Ralph and Margie Koldinger*

Cheryl and Grady Kromer

Sharon Lane*

David and Lisa Laukat

Paul and Sierra Leblanc

Ed and Jennifer Lee

Kirk and Debbie Ledbetter*

John Lee; The San Francisco
Foundation*

Minmyo and Jon Lei

Chris Lindner

Donna and Mike Lovas

Brian and Leslie Martinez

Melinda Maxfield;
The Maxfield Foundation*

Sam and Mary-Ellen McMullen

Steven L. Merrill Family
Foundation*

Mountainside Partners*

Steve and Maureen
Mullarkey-Miller in Memory
of Thomas Mullarkey Jr*

Teresa and Richard Neillo

Michele and DJ Novotney in
memory of Al Boragno*

NV Energy*

Stephen Page

Linda and Alvaro Pascotto*

Rafael and Marina Pastor

Wylie and Anne-Marie Peterson

PlumpJack Group

Jennifer and Richard Porter

Ron Randolph-Wall and
Linda Brinkley; Parasol Tahoe
Community Foundation*

Tim and Holly Racich*

Craig and Julie Rauchle

Jeannie and Kevin Reeth

The Rubin Family/Bel Air Plaza

The Richardson Family
Charitable Fund

Cory and Ryan Ritchie;
Parasol Tahoe Community
Foundation*

Rodrigo Sales*

Maryanne Sangiacomo

Martina and Matt Scanlan

Kern Schumacher and
Hollye Shepherd in Memory
of Todd Schumacher*

Tom Seeliger

Eric Shore and Fred Paul*

Holden and Claire Spaht*

Cathy and Larry Spector

Wes and Sara Sperry

Lynn Suter

Joyce and Jim Teel

Michael and Kimberly
Thesman

Kuo and Tricia Tong*

Tahoe Restaurant Collection;
Tom and Maurine Turner

Tom and Pauline Tusher

Kristy and Chris Watrud

Bill Watson and
Shireen Piramoon

Roy and Kathy Wickland*

Christopher and
Mignone Wood

Monica Young and
Jocelyn Vallieres

GRANITE-\$2,500 X3

John and Monique Adams*

David Amaranto

Laurel Andrew and Victor
Onufrieff; AFC Public
Foundation

Shant and Jenny Apekian

Randy and Deborah Bangham

Pamela and Dennis Barnedt*

Allen and Linda Biaggi

Paul Bible

Brent and Lori Bisnar;
Orange County
Community Foundation

BMO

Boatworks at Tahoe

James and Cathy Boyd*

Paul Boyd

John and Patty Brissenden;
The Sierra Fund

Jeff and Kate Brown

Robert and
Kathleen Brunswick

Chris Cairns

Mike and Caroline Buckley

CA 89 on Behalf of Lisa
and Greg Gotts

Art and Colleen Chapman*

Clark/Sullivan Construction

Bob and Carlotta Dathe*

Verdi DiSesa and
Kelsey Wilcox*

Scott and Cara Douglass*

Cathy Ebert

Claudia Florsheim*

Kristine Foss*

Sally Gardner

Scott Gillespie and
Maja Thaler

Nancy and Max Gisko;
Tahoe Truckee Community
Foundation*

Mike and Heidi Goar

Robert Goldberg and
Pamela Troy

Barry Golombik and
Mary Danahey

Darcie Goodman Collins

Granite Construction*

Cindy Gustafson and Wally
Auerbach; Tahoe Truckee
Community Foundation*

Jon and Pamela Hartman

Skip Heynen*

Bud and Suzette Hicks

Rick Holden

Michael Holland and
Katy Simon Holland*

Mark and Meganne
Houghton-Berry

Deb and Tony Howard*

Jenn Hyman

Brad and Patty Ives

Roger and Vicki Kahn

Bill and Elise Kearney

Kristine Keever
and Simon Miller

Rob and Kellie Kessel

Roger and Yvette Kotch

Diane Kounalakis
and Jeff Baxter

Larry Kushner

Hillary Lane and
Steven Hochberg

Lev Foundation;
Beth and Scott Minick

Tom and Kevil Linn*

Lena Liu and
Frank Stonebanks

Rob and Catherine Lyman

Chris Mann

Anna McGee

Chris and Viktoria McNamara*

John and Bambi Mengarelli

Anne Middleton

Colleen and Mike Muratore

Micki Napp and Phil Estipular*

NSM Corporation on Behalf
of Mark and Susanna Neave*

Brian O’Neill

Steven and Victoria Ortiz

Hannah Pence

Mary Ann and Louis Peoples;
The Boyd Family Foundation

Karen and Mark Perlroth

Plumas Bank*

Q&D Construction*

Julie and Reds Regan

The Reid Family

Mark and Heather Roberts

Ian and Sari Rogoff

Patricia and Robert Ronald*

John and Linda Roukema*

Jonathan and Susie Sabin

Chuck and Sue Scharer*

Rick and Gail Stephens

Eric and Laurie Struck*

Steven and Claire Stull

Maureen Sullivan

Tahoe Beach Club

Tahoe City Lodge

Elizabeth Treacy and
Lorry Lichtenstein

Stephen and
Katherine Van Dusen*

Peter and Annette Van Dyck*

Stan and Nicole Van Vleck

Sherrie and Anthony Varrichio

Clare Walton/Walton
Architecture and Engineering*

Trinkie Watson

Terry Watt and
Mark Karwowski*

West Coast Boat Center

Whittier Trust

Andrew and Barbara Whyman;
Parasol Tahoe Community
Foundation

Alonzo Wickers and
Casey Bloys

David and Anne Wilhoit

Tom Yamamoto and
Marietta Wu

**Renewed for multiple terms*



FRIENDS OF TAHOE DONORS

\$35,000 +

Anonymous
Gordon and Betty Moore Foundation

\$20,000 +

Amy Larson and Tom Schmutz
Harvey Motulsky and Lisa Norton

\$10,000 +

Anonymous
Anonymous
Baker Hughes
Donald and Carole Chaiken Foundation
Barry Golombik and Mary Danahey
Harold M Moore Foundation
Ralph Koldinger
Ann Mathewson
Thomas and Stacey Siebel Foundation
Truettner Family Foundation
Willametta K. Day Foundation

\$5,000+

Jeff and Ruth Bailey
Lambert Billet
Laura Brigham and Brian Beffort
Bill and Tammy Crown
William and Sharon Dally
Elizabeth Dawes
Amy Dunphy and Anthony Keris
Greystar Dev. LLC
H.M. Day
James Hayes

Nancy Hazen
Allison and Brian Jacobs
Wendy Jordan
Justice William Newsom Fund
Tricia Lundrigan and Neil Walker
Wylie and Anne-Marie Peterson
John and Andrea Ross
Julie Savage
Michael Schlessinger and Monica Smyth
Sutton Family Foundation
Verakin Capital, LLC

\$1,500-\$4,999

Jeff and Anette Adams
Brenton Ahrens
Laurel Andrew and Victor Onufrieff
Berkshire Hathaway Energy
John Bowers
Doug and Shantis Brien
John and Patty Brissenden
Buellton First 2014
Ellen and Andy Dauscher
Vic Delossantos
Daniel Durn
Enterprise Holdings Foundation
Brandon and Nicole Ewing
Thomas and Mary Kay Gallagher
Jeffrey Gleason
William Guerra
JP Morgan Chase & Co
David and Susan Kelley
Janet and Monte Klein
Mendelsohn Family Fund

Mirnahill Foundation
Meridee Moore and Kevin King
North Tahoe Marina
Michele and DJ Novotney
Standish and Anne O'Grady
Linda and Richard Offerdahl
Olander Family Foundation
Phil and Jennifer Satre
Rick and Katrina Silvani
Ian Simmons
Douglas and Marilee Tinker
Steven and Perri Touche
David and Laura Waal
Audra Weiss
Clayton Wenner

\$500-\$1,499

Mark and Alison Aldax
Anonymous
Anonymous
Ted and Mary Arbuckle
Ascent Environmental
Nicola Astley
Brendon Barnwell
Kathie Bartlett
Walter and Melody Baumgartner
Bernard and Cynthia Benson
Jim and Robin Beres
Paul Bible
Mark and Donna Blum
Douglas Booth and Margaret Simpson
Jim and Julie Borden
Dianne Bostick
Douglas and Sigrid Brown

Ryan and Holly Rose Buntain
Douglas Caldwell
Joan and David Cannon
Cindy Carano
Elizabeth and Olof Carmel
Timothy Cashman
Janet and Harry Chapman
Don and Elissa Chennavasin
Sarah Ciccarello
Lanny Cohen
Steve and Cathy Combs
Nancy Cox
Diane D'Amico
Lynn Dantzker
Kent and Elizabeth Dauten
Nancy and Henry DeNero
Tom and Ainin Edman
Gayle Ewing
Garrett Farwell
Jennifer Fearon
Jim Feenstra
Paula Ganley
Chris and Patrice Gibson
Stephen and Linda Gill
Michael Gillmore
Stephen Groner
Scott and Sue Hagel
Tom and Peggy Hall
Vida and Jeff Harband
Elizabeth Harrison and
Stephen Gleason
Birong Hu
Allen and Tina Iftiger
Melissa and Doug Ihde
J L Taylor Family Foundation
John Jersin
George and
Virginia Johannessen
Julia and Norman Kahan
Kahler Family Fund

William Kartozyan
Russell and Julie Keil
Jake and Misty Knight
Ralph and Eliana Kuhn
Kevin and Judith Kveton
Nancy Lang
Holger and Lorraine Liepmann
Joshua Lippman
Cynthia and Eric Lissol
Jake Long
Jean Lowell
Thomas and Tiffany
MacLaughlin
MAM Investments, LTD
Nick Marquis
Mars Family
Charitable Foundation
Susan Maturlo
Susan McCall
Joe McCarthy
Aramie and Kevin McDonald
Deborah Nicholas
Ken and Carrie Nickel
Megan Parr Warren
Gary and Mary Pinkus
Carole Polito
Irina and Mikhail Prishchepa
Tom Rackerby
Rhonda Raphel
Thomas Reviglio
Nathan Riedel
Ken and Gayle Riley
Brett Robinson and
Mary Ayuson
Ron and Rebecca Rothstein
Melodie and Chris Rufer
Michael Sandler
Robert and Barbara Sawyer
Edward and Jennifer Schneider
Douglas Schwartz

Lawrence and Kerstin Sidney
Reed and Mary Simmons
Ski Run Marina
Jonathan and Amy Smith
Christopher Sproul
Amelia Stoj
James and Amy Stolarski
Debra and Eric Struhsacker
Peter Tadros and
Deanna Paramore
The James R Jones 2007 Trust
Lawrence Tietig
Kris Wells
Lawrence and Deborah Young
Ronald Zech
John Zeisler and Jennifer Bailey
Riley Zeisler
Karen Zito

\$1-\$499

Allen and Linda Biaggi
David Abarta
Anthony Abruzzo
Laurence and Kim Akin
Carol Aldax
Gary Aldax
Amazon Smile
Susan Anderson
Anonymous
Anonymous
Anonymous
Todd Arnett
Karena and Jeff Bacciocco
Daniel Balsam
Bruce Barsook
Benty Properties, INC
Megan Blaisdell
Barbara Bonnett
Nancy Bostdorff

Grant Bowen
Jean Brammer
Paul Burton
James Butler
Michael and Miquette Butler
Joe Byne
Julie Callahan
Greg Campbell
David and Pam Canepa
Nancy Canter
Jillian Cardamone
Jon and April Carlson
Jonathan Carson
Rob Christy
Paul Churchill and Shelly Ross
Kirk and Rhonda Clausen
William and Cathleen Cobb
Terri Connolly
Dan and Shawn Copenhagen
Helen Coughlin
Harriet Cummings
Anthony Cupaiuolo
Dimitri Dadiomov
Brian and Megan Dahle
Peter and Larissa Daniels
Claire Dansey
Linda Davis
Patricia and Marvin Demoff
Diane DeNinno
Joseph and Annette Denniston
Patricia Disney
Michael Dolphin
Deanna Dong
Dan and Jamie Dougherty
David Douglas
Steven Douglas and
Melissa Heller
John Dovala

Charles Dowd and
Susan Maturlo
Erin Dowling
Bruce Eisner and Sandy Hill
Courtney Elbe and
Michael Looney
Thomas Engberg and
Nancy Lewis
Sandy Erlach
Richard Feller
Mathieu Fidiam
Jeffrey Fish
Roger and Nancy Fones
Paul and Jane Foster
Don Fujino
Don and Betty Fulda
Catherine Galgano
Karina Gerstenschlager
Bruce and Christie Gescheider
Nancy Gibson
Give Lively Foundation Inc.
Go To Meeting
Daniel and Anne Goeschl
Edward and Cornelia Gould
Grantline Properties LLC
John Gregory and
Mary Fenelon
Chris Griffin
Judy Guinn
Jill Haberlin
Arielle Hall
Michael Hall
Jill Harrison
David Hartford
Linda Havel
Aaron Havel
Blake Havel
James Hawkins
Catherine Hawks
Derek and Elizabeth Henninger

Elizabeth Hitchcock
James Hobbs
John Hotop
Gregory Hoyt
Joanne and Jeffrey Hurst
Tiffany Iatarola
Mark and Amy Irving
Judith Jackovics
Rebecca Johnson
Lisa Maria Judge
Ronald Kahn
Carla Keller
Dima Kovalev
Erica Kram
Devin Kramer
Jason Kreizenbeck
Teresa Lancaster
Elizabeth Landzberg
Mara Langer
Maureen Lavengood
Ryan Leggett
Michael Levin
Lansford and Linda Levitt
Jennifer Lin
Cindy and Sam Livermore
Suzanne Loper-Powers
Joan Lucas
Frederick Lurmann
Giselle Macchi
John Mackin
Patrick Madigan
Kimberly Maguire
Margaret Markdasilva
Susan McLean
Bruce and Janet McLellan
Morgan McNamara
William and Patricia Meanley
Charlotte Miller
Riaz and Lily Moledina

John Nash

Kirk and Patricia Nevins

Tim Nicholas

John Nino

Greg Novak

Margie Obenschain

Doug Odell

On Deck Clothing Company, INC.

Denise Oneto

Diane and John Pang

Putter and Mary Pence

Clyde and Jane Perlee

Will Peshall

Eric Petrosky

Gail Pfrommer

Elizabeth Piper-Forman

James Plamondon

James and Marianne Porter

Jeffrey and Barbara Quinn

Monique Rabier Moss

Jeff and Gia Rauenhorst

Gloria Reid

Roger Rempfer

Al Renker

William Rice

Greg Rinard

Dave and Liz Ritchie

Pam and Steve Robinson

Erin Roe

Jenifer and Brian Root

John and Linda Roukema

Elaine Rudolphi and Cicely Deaton

Elaine Runner

Martha Russell

Daniel Schachne

Sandra Schmidt

Michael Schutt

Richard and Dena Schwarte

Mark Sehnert

Larry and Patsy Sevison

James Shanahan

Robert Shaw

Irene Pamela Shelchuk

Harold, Pamela and Regan Singer

Allan and Kathy Slocum

Winifred Smith

James Smith

Melissa Smith

Christian Sonntag

Daniel Spilman

Cathy Sternstein

James and Rosemary Stevens

Doris Stoessel

Agnes and James Strandberg

Tracy and Donald Stroh

David and Sarah Swain

Todd and Anne Taricco

Matthew Taylor

Jim Teddy

Thomas and Margaret Therkildsen

Nancy Thompson

Jennifer and Barton Tretheway

Lila Flory Truett

Ayshe and Deniz Tuncer

Troy Turner

Lash and Guila

Dermody Turville

Terrance Tyree

Jeanne Underwood

Jennifer Valenzuela

Lewis Vanblois

Edward and Lynn Villanueva

Joy and Nathan Walker

Susan Walls

Linc and Criss Walworth

Karen Walz and Terry Morgan

Hanalee Washburn

Gary Watts

Rock Weir

William Wendin

Darla Whitehead

John E. Williams

William Wilson

Schatzi Winter

Shannon Witt

Andrew and Leslie Wolf

Tanya Wolfe

Tiffany Wong

Christine Wood

Douglas Wood

Michael and Fay Wyatt

Carol Yashar

Cynthia Yee

Erwin and Stephanie Young



EAST SHORE TRAIL DONORS, FY 22/23

\$20,000+ Andrew Sabin Family Foundation Jim Jones	Douglas and Sigrid Brown Julia Nickles Bryan Mike and Joan Buckley Jeff and Janine Bush Doug and Susie Campbell Lei Chen Shawn Clancy Barbara and Bill Colace Edward Comar Samuel Dilger Patrick Dowd and Mary Joe Gordon Maryann Dresner Alexus Erickson Eric and Angela Fleekop	Cruz Gingiloski Evelyne Harvey Richard Hutchins David and Julie Israelson Ronald and Jane Jenny John Jersin Kevin and Maia Jones Mika Michelle Kuba and Alex Shapiro William and Terri Kuchulis Tom and Angie Lalor Harlon Lee Susan Letcher Ann Longley Mitchell Family Foundation
\$10,000+ Frances Karandy		
TROUT PAVER - \$5,000+ Anonymous Therese Baldwin Nancy and William Barton Mike Bergkamp Greg Bortolin Michael and Carlyn Briggs		

Kathleen and Steven and Moore
Patricia Neuwirth
Barry and Lori Nudelman
George Prince
Ian and Sari Rogoff
Mark and Pamela Ross
Virginia Schweitzer
Chris and Keri Sheerin
JoAnn Sheerin
The Alan & Ruby
Riedel Foundation
The Coleman Family Trust
Karl Van Gundy
Laura Wade
Stan and Caryn Wilson
Marietta Wu and Tom Yamamoto

BEAR PAVER - \$2,500+

Kellen and Erin Aura
Vincent Crivello
Veronica Ecklund
Luke Esselen
Eugene Greer
Haynie Family Foundation
Thomas Mallon
James Mitchell
Jennifer Ortlinghaus
Geoffrey and Andrea Ralston
Danielle Shinmoto
Jay Stone

\$1,000+

Jacqueline Mayer
Wendy and Jonathan Cosbie
Debra and Peter Fulkerson
Mark and Elizabeth Page
Matt Bryan
Sally Colace

Thomas and
Toni Anne Dashiell
Judy and Bill Echols
Kathryn Laurinaitis
Bruce and Sue Sheldon
Mike and Marla Todd

\$500+

Dan Long
Sandra Levine
Lucas and Jina Lux
Iain Cook
Sunnie and John DeWorken
Amy Kellogg
Susan and Ken Merrill
Robert and Anne Nelson
Shayla Palmer
Margaret Payne
Timothy Ward

\$100+

Roberta Ashenfarb
Sarah Backus
Kevin Bailey
Karin Bayh
Robert and Cynthia Beart
Jaime Black
Scott Brown
Ed Davidson
Ryan DeGraffenried
Winnie Deng
Theresa May Duggan
Rachel Eastwood
Teresa Enriquez
Whitney Foehl
Jeff Forsyth
Tara Freitas
Gary Gardner

Edward George
John Gore
Jennifer Hall
Carolyn Heller
Daniel Hirschhorn
Robert Horowitz
Robert Jolley
David Kessler
Barbara Kevil
Teresa Kim
Eileen LaPorte
Jessica Lee
Nick Manis
Ragen Marsh
Patricia Mayer
John McClure
Sharon Nelson
Paula Nemethy
James Nunnally
Keith RR O'Donnell
Molly ODell
Louis Palandrani
Natalie Palumbo
Lori Plater
Thuy Reyes
Ridgeline
Kenneth Rock
Scott Scanland
Jorgen Schlemeier
Kathryn Serio
Katherine Thilgen
Margaret Trombella
James and Kim West
Benjamin Whipple
Kim Willson



PROJECT DONATIONS

ACCESS AND INCLUSION

\$25,000

Klaus and Kristin Grimm
Family Fund

AQUATIC INVASIVE SPECIES (AIS) REMOVAL

\$2,000

Jim Canepa

\$100-\$800

Gail Baker
William Blucher
Kendra Frautnick
Hilary Fylstra

Rachel Golub
Elizabeth Plette
Ken Powell and Rona Foster

\$50-\$75

Susie Paulson
Debra Roventini

CALDOR TRAILS RESTORATION FUND

\$1,000+

Emily Jameson

\$100

Barbara Miller

\$20-\$40

Nicholas Nauslar
Cyndi Pettibone

CLEAN UP THE LAKE

\$2,500

Little Family Foundation

ENVIRONMENTAL VENTURE TRUST

\$10,000

Betsy and Steven Young

\$500

Jeannine Cleary
Winifred Smith

\$100-\$250

William and Cathleen Cobb
Verdi DiSesa and Kelsey Wilcox
Charles and Feralee Levin
Chris Keillor
Alana Musante
Jordan Sullivan

\$10-\$50

Nari Miller
Maria Summers
Dorothy Moreland
Stephanie Wiggins

LAKE TAHOE SUMMIT SPONSORS

\$5,000

County of El Dorado
\$1,000-\$3,000
Douglas County
Lake Tahoe Marina Association
League To Save Lake Tahoe
Placer County
Sustainable Community Advocates
Washoe County
\$500
Lake Tahoe Visitors Authority
North Tahoe Community Alliance
Truckee North Tahoe – TMA

MEEKS RIDGE TRAIL

\$10,000

Dan and Kate Brower
Estate of Maurice L Haggerty
Rob and Catherine Lyman
Jennie O'Connor

Marcy Dutton Segre and David Segre
Carol and Ned Spieker
\$5,000
Shane McConkey Foundation
\$1,000 +
Dana Andersen
The Byrne Family Fund
Vince Hoenigman
Mark and Meganne Houghton-Berry
Jeannette Lejardi

\$500

Shannon Alten
Barry Frey
Kelley and Wyatt Ogilvy
Randy Reddig

\$100-\$250

David and Jennifer Antonucci
Allen and Linda Biaggi
Lana Corless
Gary Dei Rossi
Bright Funds
Cathy Gibb
Randall and Jana Greer
Doug Houston
Steven Jolly
Sandor Lengyel
Todd Lowe
James Nelson
Max and Stacey Pray

\$500

Susan Reed
John Segale
Barry and Gayle Sherwood
Felix and Elizabeth Wannenmacher

\$10-\$75

Grazia Caroselli Hayes

Polly Casey
Ray Costa
Susan Proctor
Laura Richards
Dirk Schoonmaker
Pete Uehlin
Scott Vendley

SKI RUN COMMUNITY PARK

\$50,000

Pam Rubin

\$5,000

DLMC Foundation

\$1,000-\$2,500

The Arnold and Jill Bellowe Family Foundation
Adam Eisenberg
Samar Fair
Jenna Langer
Laura McCabe-Edgar
Steve Noll and Stephanie Grigsby
John and Linda Roukema

\$100-\$500

Austin Allen
Aly Borawski
Joe Byne
Douglas Caldwell
Kathleen Campbell
Leilani and Mike Connolly
Kyle Conroy
Megan and Ryan Dee
Jane Griffith
Tristan Grimberty
Boris Guenebaut
Grace Harding
Dane Henry

David and Terri Jinkens
Kenneth Kasman
Michelle Keck
Brooke Laine
Kirk and Debbie Ledbetter
Ryan Leggett
Monique LeMay
Meryl Lowell
Amanda Lundie
Katie Malone
Richard and Caroline Matera
Susan Meltzer
Theresa Papandrea
Tadd and Caroline Perkins
Jeff Pflueger
Carol Piche

Tim Pirie
David Rich
Chelsea Russell
Chuck and Sue Scharer
Bonnie and Bill Smart
Angela Smith
Morgan Steel
Tetesita Tibbetts
Stephanie Tyler
Unity at the Lake
Melissa Uppendahl
Jack Valera
Katrina Veit
Beth Vollmer
Roger Welt
Shannon Witt

\$10-\$97

Dominik Bleeg
Peggy and Phil Blowney
Sheilah Boothby
Ken Chew

Katelynne Donahue
Candace Fair
Barbara Glazner
Sandy Hogan
John and Linda Macchi
Marilyn Mason
Dan May
Jack Morris
Nancy Muller
Craig Nishite
Victoria Ortiz
Kaylie Ortiz
Joanne Rolfe
Leah Schellhammer
Scott Vendley

SMARTEST FOREST FUND

\$10,000

Michael Blaszyk and Leslie Wittmann
Christopher Kohlhardt

\$5,000

Daphne Hatch
Molly and Bernard Mellor

\$1,000 +

Hallador Legacy Fund
Patricia Harrison
Sherry McConnell
Mark and Elizabeth Page
Willard L Marmelzat Foundation
\$100-\$500
Thomas and Theresa Berry
Shari Chase
Kathryn Dublin
Dave Fasoli
R M Frye
Judith Heinbaugh

Kevin and Kristy Kjer
Kevin Leary
Maren Linkugel
Scott McMillen
David McNulty
Steven and Barbara Pulver
Bonnie and Bill Smart
Catherine Strand
Cindy Sundberg
Drew and Nancy Takaichi
Carol Taylor

\$20-\$80

Lynn Brown
Jennifer Butterfass
Bec Goldman
Matthew Murphy
Kathryn Lefevre Schenk and Gary Schenk
Janet Stoddard
Stephanie Wiggins
Window on Tahoe Photography Butterfass

SPOONER STATE PARK IMPROVEMENTS

\$100,000

Linda and Alvaro Pascotto

SURFACED ART SCULPTURE

\$10,000

Tahoe Blue Vodka

TAHOE FUND ENDOWMENT

\$500

Jon Bilstein
Cindy Carano

Wilson Kwok
 Jim Shanahan
 Trinkie Watson
\$100-\$250
 Allen and Linda Biaggi
 Benjamin Bowler
 Todd and Erika Chapman
 David Hannah
 Hannah Pence
 George Ross
 Robyn Shields
 Mark Smith
 Michael Turner
 Kathleen Watty
 Frank Whelan
\$20-\$50
 Mark Barichievich
 Melinda Guajardo
 Julie Jacoby
 Garni Zimmerman

TAHOE TRAILS ENDOWMENT

\$10,000
 DLMC Foundation
\$5,000
 John William Pope Foundation
\$1,200-\$2,500
 Bruce and Michelle Lutz
 Patricia Ronald
 Pete and Carol Sonntag
 Tunnel Creek Station
\$100-\$500
 Nancy and Mark Aston
 Celia Barbaccia
 Richard Caviness

Todd Choy
 Gary and Lynn Crosswhite
 Richard and Sherry Dumke
 Mark Evans
 Stacie Gillespie
 Cristine Goldman
 Kimberlee Gromatzky
 Ryan and Jana Hattersley
 Erica Hereford
 Stephen and Cynthia Ripple
 Hilary and George Strain
\$25-\$50
 Aaron Bader
 Jean Bordon
 Pam Brown
 Donna Cohen
 Anthony and
 Joan Mary Cupaiuolo
 David Simonsen DDS Inc.
 Erik Feenstra
 Brad and Sharon Nelson
 Martha and David Welch

TAKE CARE TAHOE

\$40,000 +
 North Tahoe Community
 Alliance
 Placer County
\$25,000
 Klaus and Kristin Grimm
 Family Fund
\$10,000 +
 Lake Tahoe Visitors
 Authority, Inc
 Helen and William Neff
 Tahoe Regional Planning Agency

Travel North Tahoe Nevada
 Washoe County
\$5,000
 County of El Dorado
\$1,000
 Christopher and
 Mignone Wood
\$500
 Ted and Mary Arbuckle
 Lukins Brothers Water
 Company, Inc.
\$20-\$60
 Pamela Alsterlind
 Karen Berresford
 Diana Ditto
 Tracy Farhad
 Patricia Rothman

TUNNEL CREEK SINGLETRACK TRAIL

\$10,000
 Anonymous
\$300
 Leon Ma

UPPER TYROLIAN TRAIL

\$5,000
 Anonymous

The power of philanthropy starts with partnerships.

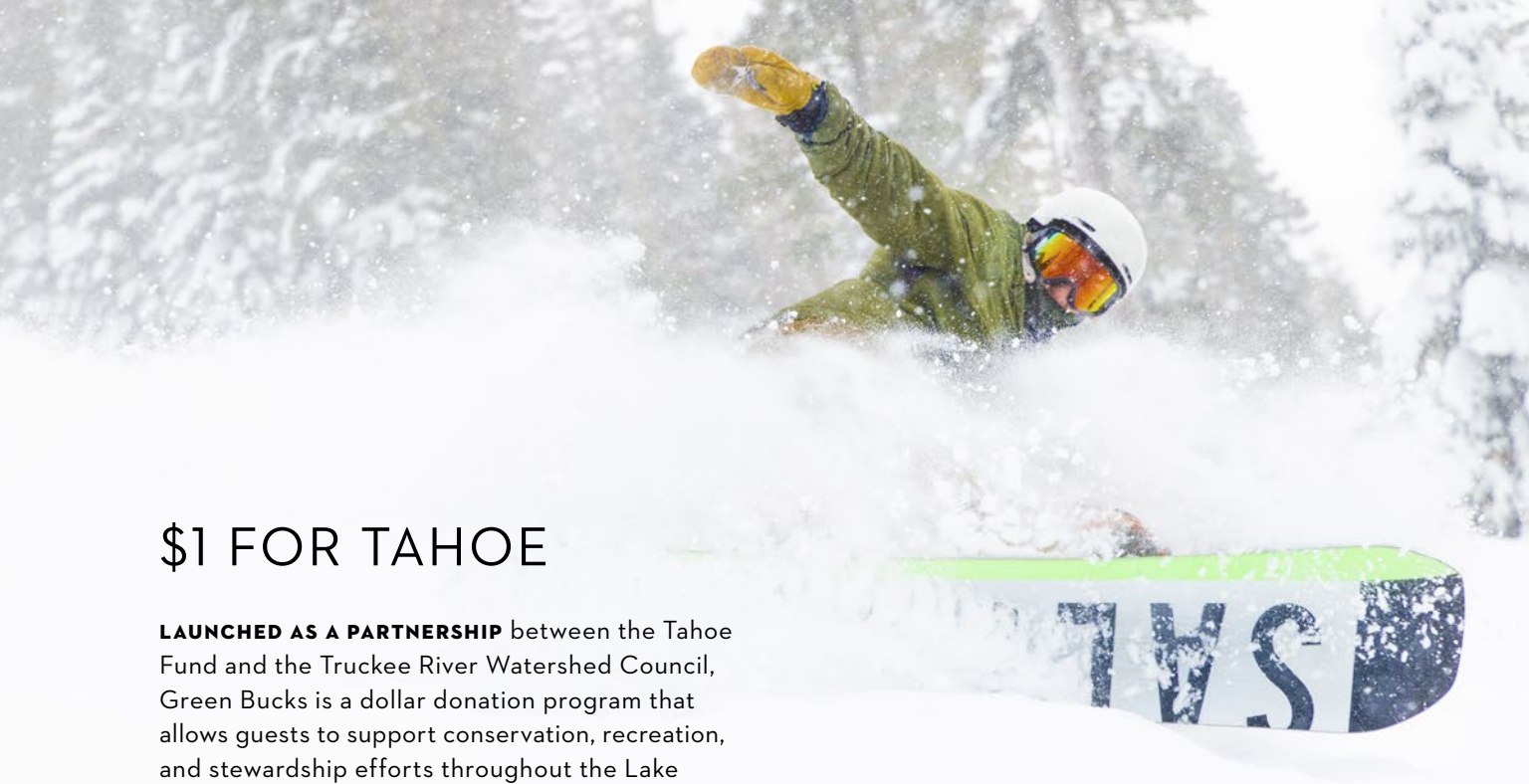


FINANCIALS

In the last fiscal year, the Tahoe Fund continued to grow its donor base and increase its net assets. The organization granted over \$1.4 million to 52 different projects.

	2023			2022
	without donor restrictions	with donor restrictions	total	total
Assets				
Cash & cash equivalents	\$ 529,945	\$ 251,441	\$ 781,386	\$ 496,696
Beneficial interests in assets held at local community foundations	4,992,721	2,900,080	7,892,801	8,294,646
Contributions & pledges receivable, net	256,732	1,027,935	1,284,667	1,083,529
Programmatic investments	50,000	-0-	50,000	-0-
Prepaid expenses	42,124	-0-	42,124	16,179
Total Assets	\$ 5,871,522	\$ 4,179,456	\$ 10,050,978	\$ 9,891,050
Liabilities & Net Assets				
LIABILITIES				
Accounts payable	\$ 139,784	\$ -0-	\$ 139,784	\$ 122,367
Payroll liabilities	27,798	-0-	27,798	29,979
Funds held for others	8,016	-0-	8,016	6,087
Total Liabilities	\$ 175,598	\$ -0-	\$ 175,598	\$ 158,433
NET ASSETS				
Without donor restrictions	564,534	-0-	564,534	239,477
Without donor restrictions-board designated	5,131,390	-0-	5,131,390	5,718,471
With donor restrictions	-0-	4,179,456	4,179,456	3,774,669
Total Net Assets	5,695,924	4,179,456	9,875,380	9,732,617
Total Liabilities & Net Assets	\$ 5,871,522	\$ 4,179,456	\$ 10,050,978	\$ 9,891,050

THANKS TO AN IN-KIND GRANT from the Parasol Tahoe Community Foundation, the Tahoe Fund continued to run its operations out of the Donald W. Reynolds Community Center in Incline Village, Nevada.



\$1 FOR TAHOE

LAUNCHED AS A PARTNERSHIP between the Tahoe Fund and the Truckee River Watershed Council, Green Bucks is a dollar donation program that allows guests to support conservation, recreation, and stewardship efforts throughout the Lake Tahoe and Truckee region.

THANK YOU TO THESE INCREDIBLE GREEN BUCKS BUSINESSES:

- | | |
|-------------------------------|--------------------------------------|
| Alpen Sierra Coffee | Mourelatos Lakeshore Resort |
| Bar of America | Northstar California |
| Big Blue Adventure LLC | Palisades Tahoe Alpine Meadows |
| Bluestone Jewelry | PlumpJack Inn |
| CA 89 | Raley's |
| Caliente | Riva Grill |
| Edgewood Tahoe Golf Resort | Superior Boat Repair & Storage, INC. |
| Gar Woods | Tahoe Exclusive Vacation Rentals |
| Heavenly Mountain Resort | Tahoe Getaways |
| Homewood Mountain Resort | Tahoe Mountain Properties |
| Kirkwood Mountain Resort | Tahoe Mountain Resorts Lodging |
| Lake Tahoe AleWorX | Truckee Properties |
| Lake Tahoe Resort Hotel | Tahoe WinterWonderGrass |
| Lake Tahoe Visitors Authority | West Shore Café & Inn |
| Lake Tahoe Yoga | |



A SPECIAL THANKS TO OUR SPONSORS





PO Box 7124, Tahoe City, CA 96145 • 775.298.0035 • info@tahoe fund.org • tahoe fund.org

The Tahoe Fund is a 501(c)(3) non-profit organization incorporated in California and registered in Nevada. All donations are tax deductible to the fullest extent of the law. Tax ID 01-0974628