



# ANNUAL REPORT 2018-2019

*Together Creating a Legacy*



# CONTENTS

---

---

1	Letter from the CEO & Chair of the Board
4	2018/19 Board of Directors
6	Tahoe Fund Project Portfolio
12	Take Care Tahoe
16	Donor Events
17	Plates for Powder
20	\$1 for Tahoe
21	2018 Lake Tahoe Summit
23	2018 Founders Circle Dinner
26	Tahoe East Shore Trail Sneak Preview
27	Founders Circle Donors
30	Stewardship Circle Donors
33	East Shore Bike Path Donors
40	Friends of Tahoe Donors
43	Project Donors
45	Financials
47	Specials Thanks

---

---

# DEAR TAHOE FUND FRIENDS,

---

**IT IS WITH GREAT PRIDE** that we present the new 2018/19 Tahoe Fund Annual Report to highlight our fiscal year that ended on March 31, 2019. We have much to celebrate as we reflect back on the many improvements we have made, and the environmental projects we have helped accomplished to preserve the beauty of the Lake Tahoe environment.

This year, because of your generous support, we have been able to fund a wide range of environmental improvement projects around the Lake. In November, we celebrated the partial completion of the new East Shore Trail with our partners and the donors who made it possible. We introduced a new Specialized mountain bike program at the Boys & Girls Club of North Lake Tahoe. After more than a decade of efforts, the Tahoe Fund helped the Tahoe Resource Conservation District acquire Johnsons Meadow, the final piece in the restoration of the Upper Truckee River, the most impaired watershed in the Sierra.

For the seventh consecutive year, the Tahoe Fund was an organizing sponsor of the Tahoe Summit. Hundreds were in attendance to mark yet another year of successful collaboration between California and Nevada agencies in effort to take care of Tahoe.

Thanks to our ever-growing Stewardship Circle, our future is bright. Commitment to the Stewardship Circle gives us the ability to plan long-term and maintain a sustainable organization. We would also like to recognize our Green Bucks business partners and their efforts to help us continue to improve the environment now, and for years to come.

Together we are creating a legacy.

  
**KATY SIMON HOLLAND**  
Chair

  
**AMY BERRY**  
CEO



Made you smile.



Hiking or running around Tahoe with some epic views will do that for you. It sure does it for us. So, we're here to make sure our lakes, trails and forest stay this incredible for years. Recently, we helped our partners at the Tahoe Rim Trail Association, the Tahoe Area Mountain Biking Association (TAMBA) and the U.S. Forest Service build and restore trails around Tahoe with the generous support of Big Blue Adventure and our donors. When we see people enjoy Tahoe this much, it gets our endorphins up, too.



TAHOEFUND.ORG

## 2018/2019 BOARD OF DIRECTORS

KATY SIMON HOLLAND, **Chair**  
President Simon and Associates;  
Former Washoe County Manager

ALLEN BIAGGI, **Vice Chair**  
Former Director of Nevada Conservation  
& Natural Resources

JULIE TEEL, **Secretary**  
Board Member & Owner, Raley's Fine Family  
of Stores; Trustee, Loyola Marymount University;  
National Salvation Advisory Board Member;  
Make-A-Wish Board Member; Crocker Art  
Museum Board Member

VERDI DISESA, **Treasurer**  
Client Advisor, J.P. Morgan

### BOARD MEMBERS

JIM BOYD  
Retired California Energy Commissioner;  
former CEO of the California Air Resources Board;  
former Tahoe Conservancy Board Member

TIMOTHY CASHMAN  
At-large Nevada TRPA Board Member

ART CHAPMAN  
JMA Ventures; Homewood; West Shore Café

SCOTT GILLESPIE  
Principal, Sandbox Studio

MIKE GOAR  
Vice President, Vail Resorts Mountain Division &  
Chief Operating Officer, Heavenly Mountain Resort

CINDY GUSTAFSON  
Placer County Supervisor; former California  
Fish & Game Commissioner

DEB HOWARD  
Owner Deb Howard & Company

JOHN B. JONES, JR.  
President, Triley Ventures; President North  
Tahoe Commercial

KEVIN MARSHALL  
President, Clear Capital

TOM MERTENS  
Krause-Taylor; League to Save Lake Tahoe  
Board Member

JIM PORTER  
Chairman Emeritus, Tahoe Truckee Community  
Foundation; Partner, Porter Simon

CORY RITCHIE  
CEO of the Ritchie family; Volunteer and  
Philanthropist in the areas of Conservation,  
Education and Youth Sports

CHUCK SCHARER  
Retired, Edgewood Companies

STEPHANIE TYLER  
President, AT&T Pacific Northwest & Nevada;  
former Nevada State Senator

TERRY WATT  
Terrell Watt Planning Consultants;  
Formerly with SF Environmental Law Firm Shute,  
Mihaly & Weinberger

### SPECIAL ADVISOR

STEVEN MERRILL  
Retired, Benchmark Capital; past Director of  
Tahoe Regional Planning Agency

### ADVISORY COUNCIL

JIM LAWRENCE  
Deputy Director, Nevada Department of  
Conservation and Natural Resources

JOANNE MARCHETTA  
Executive Director, Tahoe Regional  
Planning Agency

JEFF MARSOLAIS  
Forest Supervisor, Lake Tahoe Basin  
Management Unit

PATRICK WRIGHT  
Executive Director, California Tahoe Conservancy

# MAP

## Tahoe Fund Project Portfolio

- 1 Third Creek and Incline Creek Watershed Restoration
- 2 East Shore Trail
- 3 Incline Flume Trail
- 4 Sand Harbor Beach Improvements
- 5 Rabe Meadow Bike Path
- 6 Van Sickle Bi-state Park
- 7 UV Light Pilot Project
- 8 Ski Run Aquatic Invasive Weed Removal
- 9 Johnson Meadow
- 10 Angora Creek Bridge Replacement
- 11 Taylor Creek Glass Replacement
- 12 Taylor Creek Overlook
- 13 Emerald Fire Restoration
- 14 SR 89 Corridor Planning
- 15 Desolation Trail Restoration
- 16 Emerald Bay Asian Clam Control
- 17 Rubicon Trail and Lighthouse Improvements
- 18 West Shore Bike Path
- 19 Blackwood Creek and Eagle Rock Trail Restoration
- 20 Lakeside Bike Trail
- 21 Tahoe City Aquatic Invasive Weed Removal
- 22 Dollar Creek Bike Path
- 23 Sugar Pine Reforestation



- 24 Kings Beach Trail
- 25 North Tahoe Boys & Girls Club Mountain Biking Program
- 26 Sugar Pine Plantings
- 27 Aquatic Invasive Bottom Barrier Challenge
- 28 Generation Green
- 29 Basin Bike Racks
- 30 Take Care Campaign
- 31 McConkey Eco Challenge

■ Lake clarity ■ Recreation ■ Forest health ■ Transportation ■ Stewardship

# TAHOE FUND PROJECT PORTFOLIO

## PREMIER PROJECT

### Johnson Meadow Acquisition and Restoration

PARTNER: Tahoe Resource Conservation District; California Tahoe Conservancy, California Department of Fish & Wildlife, Barton Health, Heavenly Resort

TOTAL PROJECT COST: \$8,315,000

FUNDS GRANTED: \$100,000

**JOHNSON MEADOW**, home to 206 acres of beautiful meadow in South Lake Tahoe and the largest privately-owned section of the Upper Truckee River, is now publicly owned. This is a major milestone for the health of Lake Tahoe. The Upper Truckee River was identified as the most impaired watershed in the Tahoe Basin and the highest contributor of fine sediment impacting the clarity of the Lake. The river discharges about 2,200 metric tons of fine sediment per year and delivers approximately 60 percent of the fine sediment that enters Lake Tahoe annually from stream erosion.

Acquisition of this property on April 4th now allows for future restoration of the river and will have a dramatic, positive impact on the Lake's famed clarity. The acquisition also allows for valuable improvements to the local wildlife habitat, climate change resiliency and recreation connectivity.



Over the next several years, the Tahoe RCD and their partners will need to identify \$10-15 million in funding to begin restoration efforts for Johnson Meadow and \$60 million for the entire Upper Truckee River Watershed.

The campaign to acquire Johnson Meadow was made possible by the generous support of Barton Health and the dollar donations collected at Heavenly Ski Resort. These private donations of \$50,000 each were used to secure more than \$8 million in public funds through Prop 1 funding. This was made possible by a collaboration between the Tahoe Resource Conservation District, the California Tahoe Conservancy, California Department of Fish & Wildlife, Tahoe Fund, and the former property owners of almost a century.

---

## SIGNATURE PROJECTS

---

### Desolation Wilderness Trail Restoration

PARTNERS: Tahoe Rim Trail Association,  
U.S. Forest Service  
FUNDS GRANTED: \$80,000

**LOCATED ON THE WESTERN SLOPE** of Lake Tahoe, Desolation Wilderness consists of the most scenic hiking and backpacking destinations on the Tahoe Rim Trail. A combination of increased usage and extreme weather events has significantly degraded a popular section of trail, impacting safety, recreational experience, and water quality.

The Tahoe Rim Trail Association has begun work to recruit and engage backcountry trail crew volunteers to help improve this section of trail. Over the course of four summers, volunteers and youth crews will rehabilitate a section of the trail,



improving safety for trail users, reducing the flow of sediment into alpine lakes and streams and reducing overall impact on alpine vegetation.

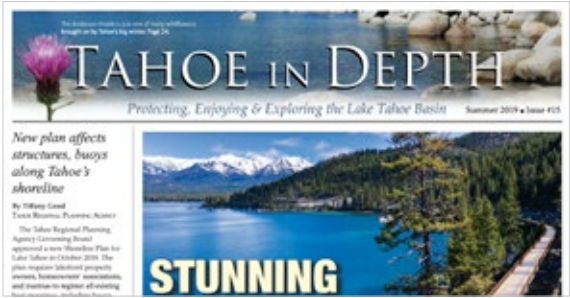
Every dollar contributed to this unique project was matched up to \$40,000 through the end of 2018. With the support of private donors, we raised the funds needed to help restore a wonderful section of trail for all to enjoy.

---

### Tahoe In Depth

PARTNER: Tahoe Regional Planning Agency  
FUNDS GRANTED: \$5,000

**TAHOE IN DEPTH** is a bi-annual news publication that aims to inspire environmental understanding and stewardship at Lake Tahoe. The purpose of Tahoe In Depth is to give homeowners, landowners, visitors and policy-makers clear, straightforward and interesting information about the Lake Tahoe environment—from successful restoration to ongoing challenges. The goal is to help people better understand the work being done to restore Tahoe's clarity and the role they can play in helping reach that outcome. The publication explores the natural and cultural history of the Tahoe Basin



while providing balanced, reliable information on a wide spectrum of scientific and planning efforts under way to protect Lake Tahoe's unique scenic and ecological qualities.

Tahoe Fund is a proud sponsor of the Tahoe In Depth publication.

---

### Generation Green 2018

PARTNERS: US Forest Service  
FUNDS GRANTED: \$25,000

**CAN A SUMMER JOB** in the woods change a life? Through an innovative program of the US Forest Service and the Great Basin Institute, local high school students are building their futures and a life-long love of the environment during an eight-week work-study program called Generation Green.

In the past 10 years, 171 kids have successfully completed this program. Of those, 95% continued on to higher education. Four graduates are now Forest Service employees and 19 are temporary



employees with the Forest Service and other natural resource agencies.

Tahoe Fund is proud to support Generation Green as they become leaders today, tomorrow and forever.

---

### Sugar Pine Plantings

PARTNERS: Sugar Pine Foundation, Bently Foundation, Patagonia, Rose Foundation and Tahoe Truckee Community Foundation  
FUNDS GRANTED: \$18,000

**HEALTHY TREES** make healthy forests, and healthy forests are diverse in their species composition. Historically, sugar pines made up 25% of the forest around Tahoe based on logging receipts from the 1800s. Today, they make up less than 5%. Tahoe's beloved pines have been decimated by a combination of historic logging and fire suppression, which favors other species along with native and non-native pathogens.

The Sugar Pine Foundation is dedicated to saving Lake Tahoe's beloved sugar pines and other white pines from blister rust by educating and involving Tahoe area students and community members of all ages. The



Sugar Pine Foundation set a goal of planting 10,000 new seedlings in the next two years with the help of the local community of residents, visitors, school children and service organizations.

With continued generous support of these plantings, local communities will learn the importance of conserving native species and our role in enhancing forest health. This project is helping bring new life to the forest.

---

## 2018 Basin Bike Racks

PARTNERS: Lake Tahoe Bicycle Coalition,  
Nevada Commission on Tourism  
FUNDS GRANTED IN 2018: \$35,000

**A MAJOR GOAL** of the Tahoe Fund is to encourage more people to leave their cars behind and to travel by bicycle. We recognize that bike racks are a critical piece of this strategy, so people can feel comfortable knowing there will be a place to safely and conveniently secure their bikes while out and about.

The Tahoe Fund partnered with the Lake Tahoe Bicycle Coalition to provide bicycle racks throughout the Lake Tahoe Basin to public agencies. They installed 215 free bicycle racks throughout the Lake Tahoe Basin, creating secure parking for 430 bicycles at key public



destinations. Supported by additional in-kind support from the Tahoe Regional Planning Agency, the Bike Coalition distributed the high-quality bike racks to Tahoe's local jurisdictions and government agencies. The racks were installed at bike paths, parks, trailheads, beaches and other community gathering places and recreation hotspots.

---

## UV Light Pilot Project

PARTNERS: Tahoe Resource Conservation  
District, Inventive Resources Inc.,  
California Tahoe Conservancy  
TOTAL PROJECT COST: \$270,000  
FUNDS GRANTED: \$10,000

**EFFORTS TO SPUR INNOVATION** led the Tahoe Fund to provide the initial funds for a project to evaluate UV light as a new method to remove aquatic invasive weeds.

Aquatic invasive weeds are a serious threat to the crystal clear waters of Lake Tahoe. Aquatic invaders such as Eurasian watermilfoil and curly-leaf pondweed have already established in the Lake. These non-native species change the natural make-up of the waters and threaten to significantly reduce the recreational use of the Lake and surrounding rivers.



The pilot program was implemented at the Lakeside Marina & Beach in 2017. Monitoring of the technology took place throughout 2018. In February 2019, the Tahoe Resource Conservation District released a report that deemed the technology an effective way to treat aquatic invasive weeds in Lake Tahoe.

---

## Kings Beach Trail

PARTNERS: Tahoe Area Mountain Biking  
Association (TAMBA), U.S. Forest Service,  
Truckee Tahoe Airport and North Tahoe  
Public Utility District  
TOTAL PROJECT COST: \$100,000  
FUNDS RAISED: \$15,000

**KINGS BEACH TRAIL** will be a family-friendly, multi-use trail and a wonderful recreational amenity located off Beaver Street. The Kings Beach Trail project aims to transform the current Off Highway Vehicle (OHV) trail for use by mountain bikes, motor bikes, hikers and equestrians while also reducing erosion problems.

The Forest Service has been redesigning OHV trails in the Tahoe Basin to help reduce erosion and sediment flow into Lake Tahoe. Modeling of the Kings Beach Trail by the Forest Service shows that up to a ton of sediment currently flows into Griff Creek. Similar trail redesigns have resulted in a 90% reduction of erosion.



The redesigned trail will help prevent the flow of sediment from the eroding trail into Griff Creek and Lake Tahoe. Trailhead parking improvements are also scheduled at the existing Beaver Street and Gasline Road trailheads.

Thanks to a grant from the Truckee Tahoe Airport, the Tahoe Area Mountain Biking Association, Generation Green and Tahoe Fund donors, the trail will open July 2019.

---

## UC-Davis State of the Lake Report

PARTNER: UC Davis-Tahoe Environmental  
Research Center  
FUNDS GRANTED: \$5,000 annually  
LEAD AGENCY: UC Davis

**THIS ANNUAL REPORT** is essential reading for the latest information on the health of Lake Tahoe, but when budget cuts jeopardized its production, the Tahoe Fund stepped in to close the funding gap. The annual State of the Lake Report published by UC Davis, Tahoe Environmental Research Center, is intended to inform non-scientists about how natural variability and human activity affect the Lake's clarity, physics, chemistry, and biology.



---

---

# North Tahoe Boys & Girls Club Mountain Biking Program

PARTNERS: North Lake Tahoe Boys & Girls Club, The Specialized Foundation, Village Ski Loft, Flume Trail Bikes, Truckee Tahoe Airport District, US Forest Service, Tahoe Area Mountain Bike Association  
FUNDS GRANTED: \$15,000

**THE BOYS & GIRLS CLUB** of North Lake Tahoe was presented with 20 new Specialized mountain bikes, complete with helmets, a storage system, and extra parts as part of a new Mountain Biking Program at the Club.

Thanks to our donors and the Truckee Tahoe Airport, the Tahoe Fund is helping with construction of a new trail that will be built in Kings Beach by the United States Forest Service and the Tahoe Area Mountain Biking Association (TAMBA). With the trail just two blocks from the Boys & Girls Club of North Lake Tahoe, we recognized an opportunity to get more kids on bikes so they can enjoy the trails literally in their backyard.



The Tahoe Fund partnered with The Specialized Foundation because of the nation-wide success the organization has had with its Riding For Focus program. Designed to help children diagnosed with ADHD concentrate at school, the Foundation's goal is to use cycling as a tool for kids to achieve academic, health, and social successes.

As part of the program, sponsored by the Reno-Tahoe Audi Cycling Club and local donors, mountain bike instruction will be provided by coach Ryan Solberg and the Truckee North Tahoe Mountain Bike Club. The Boys & Girls Club of North Lake Tahoe also plans to offer week-long summer mountain bike camps starting in 2019.

---

# McConkey Eco Challenge 2018

PARTNER: Shane McConkey Foundation  
FUNDS GRANTED: \$5,000 annually

**TAHOE FUND IS A** multi-year sponsor of a student competition designed to develop and implement ways to make schools and communities more sustainable. We are honored to support efforts to get the next generation engaged and inspired in helping solve today's environmental challenges.



---

---

# Taylor Creek Glass Replacement

PARTNER: USFS, Tahoe Blue Vodka  
TOTAL PROJECT COST: \$14,000  
TAHOE FUND CONTRIBUTION: \$7,135

**THE TAYLOR CREEK VISITORS CENTER** hosts over 150 students per day to connect classroom curriculum with real-life views of aquatic ecology. When the glass of the underwater viewing chamber broke during routine cleaning in May 2018, the visitor's center had to close the chamber to the general public. The staff worried that this natural history education tool would be lost.

Upon hearing the news, the Tahoe community stepped in to help solve the problem. Funding for the glass replacement came from the U.S. Forest Service and a combined partnership



between the Tahoe Fund and the owners of Tahoe Blue Vodka, a major contributor to the Taylor Creek Overlook funding from the previous fall. The Taylor Creek Overlook and Steam Profile Chamber allows visitors to get an up-close view of Tahoe's ecology, above and below the water.

---

# SR 89 Corridor Planning

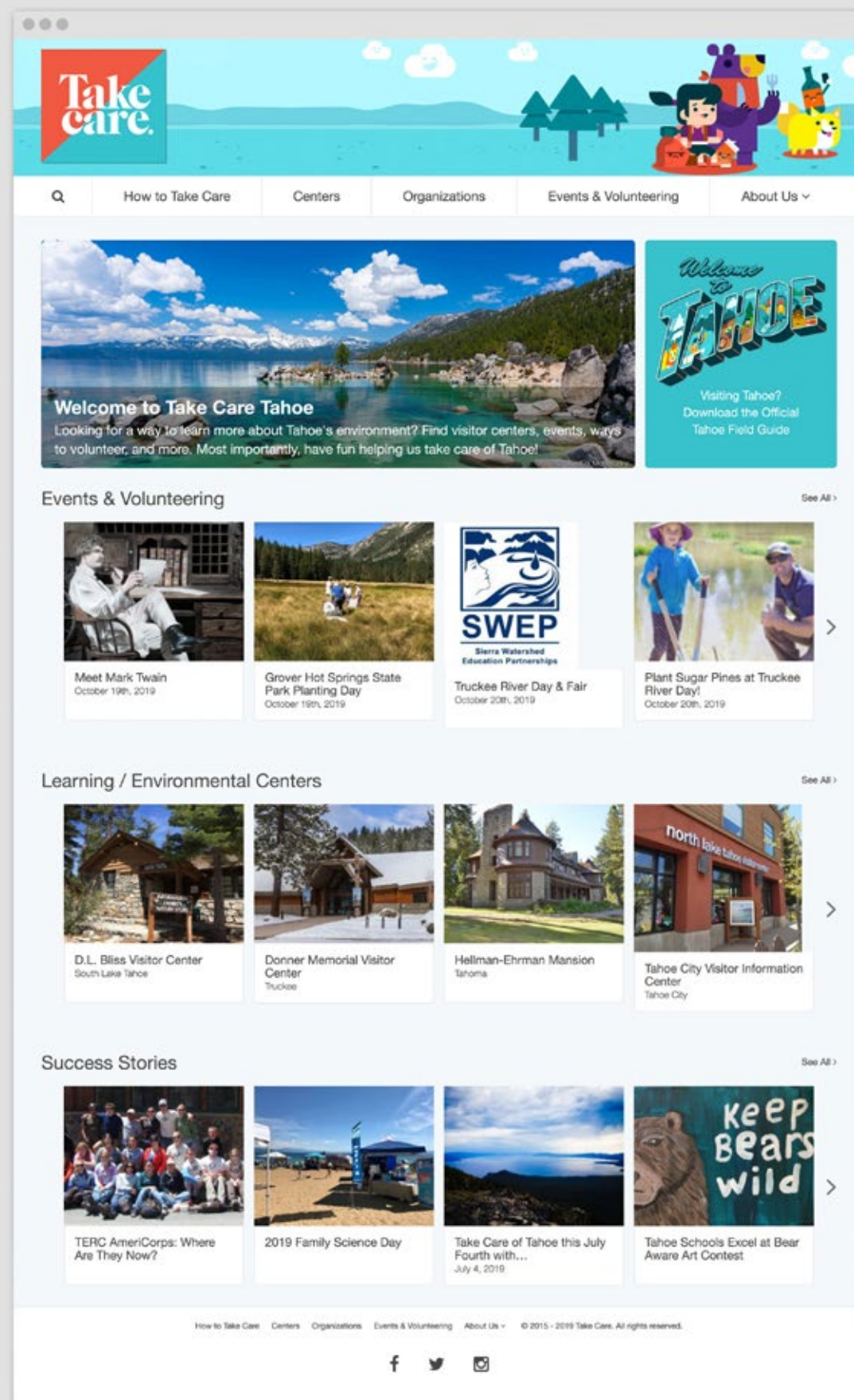
The State Route 89 Corridor Management Plan is a collaborative corridor plan with the goal to improve safety, expand travel choices, enhance visitor experience, protect the environment, and promote economic vitality on Tahoe's West Shore. The SR 89 Recreation Corridor Management Plan boundaries are from just outside the City of South Lake Tahoe and extend to the county line at Tahoma.

Project Team member organizations include: California Highway Patrol, California Lands Management, California State Parks, Camp Richardson Resort, Caltrans, Cal Fire, El Dorado County, El Dorado County Sherriff's Office, Lake Valley Fire Protection District, Fallen Leaf Fire Protection District, Meeks Bay Fire Protection District, Tahoe Fund,



Washoe Tribe, Federal Highway Administration California Division, TRPA, TTD, and USFS.

Tahoe Fund contributed to the work by bringing in visitation management experts who formerly worked for Disney to ensure the voice of the private community and the visitor experience was captured in the plan.



## TAKE CARE TAHOE

A **NEW TOOL** for ecotourism seekers allows you to get one click closer to Lake Tahoe's unique natural environment thanks to the Tahoe Fund and the efforts of more than 20 environmental organizations in the Tahoe Region.

Take Care Tahoe is a collective group of organizations that love Lake Tahoe. Working together, the group launched the newly redesigned and easy-to-use TakeCareTahoe.org website to provide a single information source for all environmental education activities in Tahoe. The goal is to make it easier for people to find fun and interesting ways to learn more about Tahoe.

Beach clean-ups, wildflower hikes, insightful discussions, and environmentally friendly festivals are just a few of the opportunities people can find on the new site. Timely information on all the latest environmental events and volunteer opportunities around the Lake is also available, with a search feature that allows people to find activities during specific timeframes. People can also discover information on more than a dozen centers where they can spend time learning more about the science, history, and environment of Tahoe.

Funding for the site was provided by Tahoe Fund and a grant from AT&T.



---

## DONOR EVENTS

---

**EVERY YEAR,** Tahoe Fund donors have the chance to attend a number of different events to celebrate their donations, as well

as the progress and completion of major environmental projects here at the Lake.

---

# PLATES FOR POWDER

**THROUGH THE SALE** of Lake Tahoe License Plates, the California Tahoe Conservancy and Nevada State Lands each receive funding from their respective DMV's for important environmental improvement projects in the Basin. Over 96% of the special plate fees are put toward hiking trails, biking trails and watershed restoration projects. The Tahoe Fund, in an example of public-private partnership, is

partnering with the Tahoe Conservancy to promote the plates to help bring increased public funding to the Basin. When a person purchases a California or Nevada Tahoe license plate via the [www.tahoefund.org](http://www.tahoefund.org) site, he/she will have an option to receive one ticket from a participating resort of their choice in either the downhill or Nordic categories.

## Thank you to our 2018-19 season participating partners:

- |                |                                 |
|----------------|---------------------------------|
| • Diamond Peak | • Sierra-at-Tahoe               |
| • Heavenly     | • Squaw Valley   Alpine Meadows |
| • Homewood     | • Tahoe City Winter Sports Park |
| • Kirkwood     | • Tahoe Donner                  |
| • Northstar    | • Tahoe XC                      |



# \$1 FOR TAHOE

We proudly support the Tahoe Fund, a nonprofit that helps complete environmental projects like bike trails and watershed restoration. We add \$1 as a non-taxed item to checks over \$20. Please tell your server if you would like to opt out of this donation and we will be happy to remove it from your bill.

We are grateful for this spectacular lake and invite you to help us preserve it.



[www.tahoefund.org](http://www.tahoefund.org)



## Tahoe Fund Project Portfolio

- Lake clarity
- Recreation
- Forest health
- Transportation
- Stewardship

- |   |  |
|---|--|
| 1 Third Creek and Incline Creek Watershed Restoration | 16 Rubicon Trail and Lighthouse Improvements             |
| 2 East Shore Trail                                    | 17 West Shore Bike Path                                  |
| 3 Incline Flume Trail                                 | 18 Blackwood Creek and Eagle Rock Trail Restoration      |
| 4 Sand Harbor Beach Improvements                      | 19 Lakeside Bike Trail                                   |
| 5 Rabe Meadow Bike Path                               | 20 Tahoe City Aquatic Invasive Weed Removal              |
| 6 Van Sickle Bi-state Park                            | 21 Dollar Creek Bike Path                                |
| 7 UV Light Pilot Project                              | 22 Sugar Pine Reforestation                              |
| 8 Ski Run Aquatic Invasive Weed Removal               | 23 Kings Beach Trail                                     |
| 9 Johnson Meadow                                      | 24 North Tahoe Boys & Girls Club Mountain Biking Program |
| 10 Angora Creek Bridge Replacement                    | 25 Sugar Pine Plantings                                  |
| 11 Taylor Creek Glass Replacement                     | 26 Aquatic Invasive Bottom Barrier Challenge             |
| 12 Emerald Fire Restoration                           | 27 Generation Green                                      |
| 13 SR 89 Corridor Planning                            | 28 Basin Bike Racks                                      |
| 14 Desolation Trail Restoration                       | 29 Take Care Campaign                                    |
| 15 Emerald Bay Asian Clam Control                     | 30 McConkey Eco Challenge                                |

## \$1 FOR TAHOE

**LAUNCHED AS A PARTNERSHIP** between the Tahoe Fund and the Truckee River Watershed Council, Green Bucks is a dollar donation

program that allows guests to help raise funds for the local environment.

### Thank you to these incredible Green Bucks businesses:

- Alpen Sierra Coffee
- Bar of America
- Big Blue Adventure LLC
- Blue Angel Café
- Bluestone Jewelry
- Caliente
- Edgewood Tahoe Golf Resort
- Event Masters
- Gar Woods
- Heavenly Mountain Resort
- Homewood Mountain Resort
- Kirkwood Mountain Resort
- Lakeside Inn
- Lake Tahoe AleWorX
- Lake Tahoe Resort Hotel
- Lake Tahoe Visitors Authority-Tahoe South
- Lake Tahoe Yoga
- MontBleu Resort Casino & Spa
- Mourelatos Lakeshore Resort
- Northstar California
- PlumpJack Squaw Valley Inn
- Riva Grill
- Squaw Valley | Alpine Meadows
- Tahoe Exclusive Vacation Rentals
- Tahoe Getaways
- Tahoe Mountain Properties
- Tahoe Mountain Resorts Lodging
- Truckee Properties
- Tahoe WinterWonderGrass
- West Shore Café & Inn



## 2018 LAKE TAHOE SUMMIT

---

**THE TAHOE FUND** was the organizing sponsor of the Annual Lake Tahoe Summit held on August 7, 2018 at Sand Harbor State Park. The summit, hosted by Senator Dean Heller, celebrated the success of the Environmental Improvement Program while keeping an eye on the work that is yet to come. The

unbelievable show of support from U.S. senators, lawmakers, governors, and other representatives has proven to be a valuable asset in protecting and conserving our beautiful lake.



# 2018 FOUNDERS CIRCLE DINNER

**ON AUGUST 6, 2018**, the Tahoe Fund held it's 8th annual Founders Circle Dinner on the lawn of the new Lodge at Edgewood Tahoe. Our guests were treated to a stunning sunset as we celebrated the great work of the organization

to help ensure more environmental improvement projects are completed. Special thanks to our major dinner sponsors, Barton Health and Tahoe Forest Health System.



---

## TAHOE EAST SHORE TRAIL SNEAK PREVIEW

---

**ON NOVEMBER 7, 2018,** Nevada Governor Brian Sandoval joined over 100 project partners and donors for a sneak preview of the new Tahoe East Shore Trail. In his remarks, he noted it will likely be “the most beautiful path in the country” when completed.

The East Shore Trail is an ADA approved, 10-foot wide shared path that spans three miles and includes an impressive 810-foot bridge. When completed in June 2019, the trail will feature 11

beach access points, 16 beautiful vistas, and no shortage of stunning views.

The donors of the Tahoe Fund raised more than \$1 million to help secure the public funding needed to construct the path. Once completed, it will greatly improve the safety along the Rt 28 corridor, storm water management and erosion control, and provide new access to the east shore for walkers and bikers.



# FOUNDERS CIRCLE DONORS

## Platinum - \$25,000+

Blum Family Foundation  
George & Suzy Bull  
Edgewood Companies  
Dan Haas  
Jan & David Hardie;  
Parasol Tahoe Community Foundation  
Eric Havian & Jean Jarvis  
The Sandra and Steven Hardie Fund;  
Parasol Tahoe Community Foundation  
JMA Ventures  
Robert S. & Dorothy J. Keyser Foundation  
Steven Merrill  
Bob & Cindy Pester Family  
Cory & Ryan Ritchie;  
Parasol Tahoe Community Foundation  
Serendipity Fund;  
Parasol Tahoe Community Foundation  
Shackleton Family  
Ray Sidney  
Squaw Valley  
Vail Resorts

## Gold - \$10,000

Tim & Denise Cashman  
Colleen & Art Chapman  
E. L. Cord Foundation  
Richard & Theresa Crocker  
Cindy Gustafson & Wally Auerbach  
Robert & Robin Holman  
Sharon Lane  
Joanne Marchetta  
Mathewson Trust  
NV Energy  
Daniel Tosh  
Ranson & Norma Webster Foundation  
Roy L. Wickland  
E.L. Wiegand Foundation

## Silver - \$5,000

John & Monique Adams  
Eric Affeldt  
Anonymous  
Arbor Realty Trust

Ascent Environmental  
AT&T  
Amy Berry  
Seth Berry  
Allen & Linda Biaggi  
Jim & Cathy Boyd  
California 89  
Capurro Foundation  
Clif Bar Family Fund  
Blaise & Leslie Carrig  
Warner Chabot & Felica Marcus  
Brett & Karen Coleman Foundation  
DMB Pacific  
EN2 Resources  
Paul & DD Felton  
East West Partners/Tahoe Mountain  
Resort Foundation  
Claudia A. Florsheim  
The Don & Janie Friend Family  
Ken & Gina Gardner  
Joan Gibb  
Scott Gillespie, Maja Thaler & Family  
Max & Nancy Gisko  
Jason & Melissa Green Fund  
Samuel & Suzanne Harrosh  
Thelma B & Thomas P Hart Foundation  
Bob & Tammy Hassett  
Dr. Laurence Heifetz & Dr. Daphne Palmer  
Randy Hill  
Meganne & Mark Houghton-Berry  
Fred & Barbara Ilfeld  
Vicki & Roger Kahn  
Jaquish & Kenninger Foundation  
Ralph & Marjorie Koldinger  
Lahontan Community Foundation  
Lawrence Realty

Stephen A. Lind  
Jean & Wayne Lowell  
Carol & Craig Lundin  
Nancy & Charles McDermid  
Sam & Mary-Ellen McMullen  
Dean & Madylon Meiling; Spirit of the Lake Fund  
Tom Mertens & Barbara Krause  
Dan Morgan  
Parasol Tahoe Community Foundation  
Barbara Perlman-Whyman & Andrew Whyman  
PlumpJack Group  
Jim & Marianne Porter  
Marty & Anne Putnam  
JT & Linde Ravize  
Jon Q. & Ann S. Reynolds Fund  
Ritz-Carlton Lake Tahoe  
Bill & Jennifer Rock  
Ian & Sari Rogoff  
Patricia & Robert Ronald  
Mike & Carol Sabarese  
Chuck & Sue Scharer  
Michael Schaufeld  
Tom Seeliger  
Larry & Patsy Sevison  
Fred Smith  
Carol & Ned Spieker Fund  
Lynn M. Suter  
Tahoe Beach Club  
Julie Teel & Fred Motamedi; Lakehouse Mall  
Angelo Tsakopoulos  
Terry Watt & Mark Karwowski  
Karen & Andy Wirth  
Roger & Bea Wittenberg  
Patrick & Rachel Wright



# STEWARDSHIP CIRCLE PROGRAM

---

**THE STEWARDSHIP CIRCLE CAMPAIGN** is designed to help inspire, motivate, and empower stewardship of our important national treasure. Donors can join the Stewardship Circle with a multi-year commitment of at least \$2,500 a year for 3 years.

Stewardship Circle members are a distinguished group of leadership donors made up of individuals, foundations and corporations helping us to restore and enhance the Tahoe environment. Thank you to our Stewardship Circle donors!

## Double Platinum – \$50,000 x3

Blum Family Foundation\*

## Platinum – \$25,000 x3

Ron & Maureen Ashley\*

The Sandra & Steven Hardie Fund\*, Parasol Tahoe Community Foundation

Dan Haas *in Memory of Joanne Haas*; Marin Community Foundation\*

Lakehouse Mall, Motamedi Family, Julie & Mike Teel

Kevin & Sheri Marshall\*

Squaw Valley | Alpine Meadows

Vail Resorts

## Gold – \$10,000 x3

Duane & Becky Andrews

George & Sue Bull

Donald & Carole Chaiken Foundation

David Contis & Sandra Cath

Klaus & Kristin Grimm; Community Foundation of Western Nevada

Ginnie & Peter Haas Jr.; The San Francisco Foundation

Esther & Gerry Levandoski\*

Bob & Cindy Pester

James & Amy Ramsey

Eric Havian & Jean Jarvis; The San Francisco Foundation\*

Ritz-Carlton, Lake Tahoe

Serendipity Fund, Parasol Tahoe Community Foundation\*

Silver – \$5,000 x3

Sigmund & Susan Anderman  
AT&T\*  
Walter & Estel Binder  
Nancy Binz  
Paul Boschetto *in Honor of Cindy Pester\**  
Steven & Renee Bouck;  
Parasol Tahoe Community Foundation\*  
Greta & Nicholas Brown  
Camp Richardson Resort;  
Bob & Tammy Hassett\*  
Tim & Denise Cashman\*  
Robert Chester & Jennifer Trask\*  
Richard & Theresa Crocker;  
Community Foundation Santa Cruz County  
Janie & Donny Friend;  
Jewish Community Federation  
Jason & Melissa Green Fund;  
Parasol Tahoe Community Foundation  
Hard Rock Hotel, Lake Tahoe  
Coldwell Banker Select  
*on Behalf of Dan Jacuzzi\**  
John & Glennis Jones\*  
Kevin & Rebecca Kassekert  
in honor of Garrett Hartman  
Jim & Nancy Kennedy  
Ralph & Margie Koldinger\*  
Sharon Lane  
John Lee; The San Francisco Foundation  
Melinda Maxfield Foundation  
Sam & Mary-Ellen McMullen  
Steven L. Merrill Family Foundation

Mountainside Partners\*  
Teresa & Richard Neillo  
NV Energy\*  
Linda & Alvaro Pascotto  
PlumpJack Group  
Anne & Marty Putnam\*  
Kent & Trixie Putnam  
Ron Randolph-Wall & Linda Brinkley;  
Parasol Tahoe Community Foundation\*  
Richardson Family Charitable Fund  
Cory & Ryan Ritchie; Parasol Tahoe  
Community Foundation\*  
Rodrigo Sales  
Kern Schumacher & Hollye Shepherd  
*in Memory of Todd Schumacher*  
Tom Seeliger  
Eric Shore & Fred Paul  
Lynn Suter\*  
Tom & Pauline Tusher  
Bill Watson & Shireen Piramoon  
Roy & Kathy Wickland\*  
Steve & Betsy Young

Granite – \$2,500 x3

John & Monique Adams  
Robin & Fred Albee-Keish  
Laurel Andrew & Victor Onufrieff;  
AFC Public Foundation  
Pamela & Dennis Barnedt  
Allen & Linda Biaggi  
Paul Bible

Brent & Lori Bisnar;  
Orange County Community Foundation  
James & Cathy Boyd  
Robert & Kathleen Brunswick  
CA 89 *on Behalf of Lisa & Greg Gotts*  
Vic & Debbie Castello  
Art & Colleen Chapman  
Todd & Erika Chapman\*  
Clark/Sullivan Construction  
Bob & Carlotta Dathe  
Bill & Kelly Dietz  
Verdi DiSesa & Kelsey Wilcox  
Scott & Cara Douglass  
Claudia Florsheim\*  
Kristine Foss  
Nancy & Max Gisko;  
Tahoe Truckee Community Foundation  
Mike & Heidi Goar  
Barry Golombik & Mary Danahey  
Cindy Gustafson and Wally Auerbach;  
Tahoe Truckee Community Foundation\*  
Jan Hardie *in Honor of Cory Ritchie*  
Skip Heynen  
Michael Holland & Katy Simon Holland  
Deb & Tony Howard\*  
Tom & Kevil Linn  
Chris McNamara & Viktoria Low\*  
Steve and Maureen Mullarkey-Miller  
*in Memory of Thomas Mullarkey Jr*  
IBM *on Behalf of Micki Napp & Phil Estipular\**

NSM Corporation  
*on Behalf of Mark & Susanna Neave*  
Michele & DJ Novotney  
*in Memory of Al Boragno*  
Dan Osbourne *in Honor of*  
*Irene & David Osbourne*  
Mary Ann & Louis Peoples;  
The Boyd Family Foundation  
Susan & Tom Petrizzio  
Plumas Bank  
Gerilee & Bryan Pope  
Q&D Construction  
Tim & Holly Racich  
Ian & Sari Rogoff  
Patricia & Robert Ronald  
Jonathan & Susie Sabin  
Chuck & Sue Scharer\*  
Holden & Claire Spaht  
Rick & Gail Stephens  
Eric & Laurie Struck  
Steven & Claire Stull  
Tahoe Beach Club  
Tahoe City Lodge  
Stephen & Katherine Van Dusen\*  
Peter & Annette Van Dyck  
Clare & Steve Walton  
Terry & Mark Karwowski Watt\*  
Andrew & Barbara Whyman,  
Parasol Tahoe Community Foundation

*\*Renewed for multiple terms*

# EAST SHORE BIKE TRAIL DONORS

## Vistas & Kiosks

**Vista 1:** Donny & Janie Friend; Jewish Community Foundation

**Vista 2:** Nancy Binz

**Vista 3:** Aaron Moore and Jason & Melissa Green; Parasol Tahoe Community Foundation

**Vista 4:** Maryanne Sangiacomo

**Vista 5:** Susan McMillan and Tom Kenny

**Vista 6:** Parasol Tahoe Community Foundation & Tahoe Truckee Community Foundation

**Vista 7:** Jim, Nancy & Carter Kennedy; Vanguard Charitable Endowment

**Vista 8:** Tim & Holly Racich and Kevin & Sheri Marshall

**Vista 9:** Ron & Maureen Ashley

**Vista 10:** Ritchie & Hardie Families; Parasol Tahoe Community Foundation

**Vista 11:** Rob & Amy Alston and Pamela & Dennis Barnedt

**Vista 12:** Cashman Family

**Vista 13:** Kern Schumacher and family

**Vista 14:** Jan & Julie Clark and Norm Pease

**Vista 15:** Steven & Sandy Hardie; Parasol Tahoe Community Foundation

**Vista 16:** Janet Mullen

**Vista 16a:** Karen Mullen-Ehly & Ray Ehly

**Kiosk 1:** Dan Brower & Family

**Kiosk 2:** Raley's Foundation

**Interpretive Panels:** NV Energy Foundation

**Benches:** Dave & Cheryl Agresti

Robert & McKenna Buckley *in Memory of Amy Buckley*

Douglas & Susan Campbell

Deborah Nicholas *in Memory of Nick Nicholas*

**Trout Paver - \$5,000+**

Andrew Sabin Family Foundation

David Bobzien

Renee & Steven Bouck; Parasol Tahoe Community Foundation

Robert & Jackie Byrne

Victor & Deborah Castello

CBS EcoMedia Inc. *on Behalf of Toyota*

David Contis & Sandra Cath Granite Construction

J. Stuart Haldan

Michael & Bonnie Hope

Isagenix International

Esther & Gerry Levandoski; Santa Cruz County Community Foundation

Tony Lillios

Mahal Family; Hemkund Foundation

Sean & Deanne Moore

Janet & Monte Klein Family Foundation

IBM *on Behalf of Micki Napp and Phil Estipular*

Jim Pierce

Raymond E. Ehly Foundation

Ron Randolph-Wall & Linda Brinkley; Parasol Tahoe Community Foundation

Gary Thomsen *in Honor of Mariel Thomsen*

The Thomas & Thelma Hart Foundation

Marianna Vaughan *in Memory of Nora Elizabeth Temple*

**Bear Paver - \$2,500+**

AFC Public Foundation

Beth Anderson

Laurel Andrew & Victor Onufrieff

Ron & Maureen Ashley *in Honor of Ryan Ashley*

Kevin & Ann-Marie Barnes

Michael Brumbaugh *in Honor of Griff & Wes Brumbaugh*

Guy & Phyllis Conces

Bob & Carlotta Dathe

Cathy Ebert

Bill & Judy Echols

Paul Eykamp & Stephani Jensen

Karen Fukumura

Linda Gillcrist, *in Honor of Bingo*

J. Stuart Haldan Family; Parasol Tahoe Community Foundation

Douglas & Debra Highsmith

Jessica & Paul Jameson

Janet & Monte Klein Family Foundation

Sheryl Johnson Family & Friends, *in Memory of Tim Johnson*

Samuel & Truman Kasman

Jagjit Kaur

David & Susan Kelley

Jennifer Kinch, *in Memory of Gregory Hilton Kinch*

La Bodeguita Del Medio; Lara & Michael Ekwall

David & Lisa Laukat

Kevil & Tom Linn

Milken Family Foundation

Janet Mullen

Michele & DJ Novotney

Carol & Joseph Page

Scott & Deana Patrick

Carole Polito

Gary & Sharon Prosenko

Anne & Marty Putnam

Kent & Trixie Putnam

Michael Schaufeld *in Honor of Michael Sandler*

Casey Schmidt & Jennifer Cannon

Kuo & Tricia Tong

Gwen Davis Toso

The Verstappen Family Foundation

Geoff & Sally White

**\$1000+**

J. Andrews Harris

James & Caroline Kaplan

Greg Mckay

NCE Engineering

Preger Family Fund; Parasol Tahoe Community Foundation

Louis & Mary Ann Peoples

Brett Robinson

Julie Savage

Winifred & Clegg Smith

**\$500+**

Ascent Environmental

John & Rajashree Benediktsson

Julia Nickles Bryan

Sandra Cath

Evelyn Chipman

Brady Dolan

Bill & Judy Echols

Florence & Steven Goldby

Gunderson Law Firm

John Higley

Ralph & Eliana Kuhn

David & Dana Loury

Jennifer Loving

Mark & Peggy Meadows

Beth & Scott Minick

Carole Polito

Kaye Shackford

Larry & Cathy Switzer

Tahoe Ski Bum

Arthur Winkleback

Carol & Bill Yeates

Karen Zito & Manuel Calderon

**\$100+**

John & Gladys Aadland

Cathy & Mike Abelson

Lauren Accinelli

Muriel Del Agostino

Judy Alioto

Lisa & Mike Allred

Adam Althoff

John Althoff

Sydney Althoff

Joni Amaroli

Joyce Anzelc *in Honor of Joyce & Marty Anzelc*

Janet Baldwin

Haley Ballinger

Lori A. Baptista

Kristan Barbour

Aprile & Dennis Barker

Bill & Michelle Barnes

Neil, Jill, Brandon & Trevor Barnes

Nancy Barrett

Barbara Basso <i>in Honor of Dr. Tracy L. Basso</i>	John Butler	Rita Cwalina
Richard Beard	Laurie & Robert Byren	Lani Davies <i>in Memory of Greg Kinch</i>
Linda Bell	Curtis Campi	Roger Delgado
Linda Bell <i>in Honor of Terry Bell, Jason Bell, Brendy Bell Alsup</i>	Ken & Denise Cash	Andrea Dennis
Susan Benson <i>in Memory of Larry Benson</i>	Nicholas Casini	Kerry & Greg Donovan
Gay Bentley	Michael Cassacia	Lynne Doyle
Jim Beres	Amy Cecchi	John Draheim
Paul & Maria Berning	The Ceragioli Family	Chuck & Judy Drake
Casey Beyer	James Chang	Bill & Beth Drewes
Debby & Mike Bird	Tseng Ho Chen	John & Heidi Drum <i>in Honor of Don &amp; Patti Hill</i>
David Bobzien	Bill Cherry	Don Duckworth <i>in Memory of Daryl Robert Duckworth</i>
Monique & Tad Bogdan	Glenn Childs	Sabrina Dukes
John Bowers	Michael Christian	Madonna Dunbar
Julie Bowman <i>in Honor of Roald Waraas</i>	Owen Christie	Michael Durand
Schatzi Boyd	Clark Chuka	Bill & Laura Durica
Sandra & Russ Bradford <i>in Honor of Ben &amp; Cassie McClure</i>	Eddie Claridge	Hank Echter & Karolina Hedman
Chloe & Caitlin Branson	William Clark	Gina Ekberg
Rachel Bross	Sydney Coatsworth	Michael Ekwall <i>in Honor of Lou &amp; Barbara Steck</i>
Lynn Brown <i>in Memory of Ed Wurtele</i>	Julie Cole	Mark, Mary, Jessica, & David Ellingson
Steve & Patrice Bruni	Collins Engineering Consulting, LTD.	Erin Ellis
Julia Nickles Bryan	Theresa Colombini	Geoffrey Elmore
Patty & John Buchanan	Mike & Stacy Combs	Jill Elmore
Bob & Margo Burdette	Dennis Concannon	Megan Enright
John Busch	Bevan Cooney	Danielle Erikson
John Butera	Lisa Cooper	David Faucher
James & Molly Butler	John Copoulos	Gavin Feiger
	Ray Costa	Dan Finkelsetin
	Mary Alice Cox	
	Brad & Rebecca Crowell	
	Harriet Cummings	
	Brian & Taylor Curler	
	Charlotte & Chet Curtis	

John Finn <i>in Memory of Dawn Finn</i>	Niki Hadley-Kamptz	Angela James <i>in Honor of Ashlyn Pepper James</i>
Christopher Finne	Deborah Hager-Woodcock	Angela James <i>in Honor of Daisy Leanne James</i>
Gareth Fong	Steve & Cheryl Hale	Dick & Becky Johnson
Daniel Ford	HPM Photography	Tracey Johnson
Ryan Forvilly	Collin Harris	Kent Johnson
Jane Frank <i>in Honor of Jeff, Heidi, &amp; Heather Frank</i>	Arthur & Kimberly Harton <i>in Memory of Greg Kinch</i>	Pamela Johnson
Jane Frank	Dawn Heartman	Shane Johnson
Jonathan Fuhrman	Ann Heese	Gail Kane
Catherine Furco	Cody Helwig	Dominik Karelus
Mike Gabor	Pete Henderson	Kasman Family
James & Bonnie Gaither	Elizabeth Hendrickson <i>in Honor of William Hendrickson IV</i>	John & Catherine Kerns
Donna Gallo	Timothy & Annette Heying	Scott Kiernan
Dana Gauthier	Randy Hill	Richard Kiesel
Ben Geis	Richard Hirsch	Doug Klotz
Brian Gerhart	Tseng Ho	Mark Kimbrough
Ned Gian	David Hoffman	Ron & Leesa Kirkish
Cathy Gibb <i>in Honor of Glenn S. Gibb D.D.S.</i>	Melissa & Daniel HoMo	Mark Kirkland
John & Sonja Glenn	Rachel & Ryan Horton	Jane Kirton
Gwen & Phil Gluckman	Norman Howard	Jasmine & Levi Kleiber
Robert Goldberg	Hunter Howatt	Ivan Koon
Chris Gonfiantini	HPM Photography	Tamara & Jay Kornmayer
Karen Gotelli	Sue Hughes	Brian & Kelly Krolicki
Edward & Cornelia Gould	Margaret Hughes <i>in Honor of Jan Hughes</i>	Valerie Kuchulis
Kerry Grana	Margaret Hughes <i>in Honor of Janet &amp; Brian Davis</i>	Rusmin Kudinar
Michele Grau-Young	Vicki Ibaugh	Rainer & Lisa Kumbroch
Priscilla Gray	Mark Irving	James Lamb <i>in Honor of Heather Lamb</i>
Chris Greenman	Tasa Herndon, Roger Herndon & Valerie Scatena; Island Framing	James Lamb <i>in Memory of David Lamb</i>
Randall Greer		Cheryl Lancaster
Magda Greyling		Renzo Lardelli
Ashley Grush		

Timothy Layhee	Sarah Miller	Abby Paris
McAvoy Layne	Michael & Jeanne Milligan	Stephen & Marianne Pearsall
McAvoy Layne <i>in Honor of Dorothy Makley</i>	James Mills	Bill & Amuer Phillips
Eugene Lee	Walter Mirczak	Khal & Brian Pluckhan
Lisa & Austin Lellis	Riaz & Lily Moledina	Carole Polito
Michael Lellis	Jenny Molinelli	Amanda Poole <i>in Memory of Greg Kinch</i>
Thomas Leone	Joanne Monardo <i>in Honor of Joanne, Rosie &amp; GiGi Monardo</i>	Kelsey Porter <i>in Honor of Samantha Porter Shirley</i>
Robert & Leslie Levy	Alba Morales	Suzanne & Randy Pottle
David & Rita Levy	Mike & Bette Morgan	Bob & Eleanor Preger
Melissa Lewis	William Morris	Sarah Purgason
Charlie Lincoln	Jeff & Lori Morrison	Jeffrey Quinn
Rebecca Lincoln	Melissa Murphy <i>in Honor of Donovan Michael Murphy</i>	Karen Rabak
Kathryn Little <i>in Memory of Donna &amp; Jaime Flota</i>	Michael Murphy	Jeanne Radtke
Ana Liu	Bill & Helen Neff	Danielle Rees
Live A Tahoe Day	Sherily Nemedez	Jeannie Reeth
Jennifer Lloyd	Paul Newnham	Phil & Roberta Rice
Joan Lloyd	Paul Nickles	Alvyn Richards
Viktor Lockhart	David & Darlene Nilsson	James & Cynthia Richardson
Barbara Longshore	Chris & Marilyn Nolet	Kristoff Richter
Cale Lopez	Greg Novak	Dave & Debbie Richwood
Denorah Lorraine	Barbara & Mike Nutting	Jackson Ring
Maureen Lowe	Shawn O'Hara <i>in Memory of Pat O'Hara</i>	Dave & Liz Ritchie <i>in Honor of Cory Ritchie</i>
John Lund & Andrea Dennis	Shawn O'Hara <i>in Honor of Shawn O'Hara &amp; Steve Binder</i>	Patti Rittling <i>in Memory of Greg Kinch</i>
Amanda Lundie	James O'Leary	Susan Rock & Tom Millhoff
Scott & Susan Maltz	Tom & Chris Anne Olenic <i>in Memory of Greg Kinch</i>	Dr. Mary Lee Rogers
David Marston	Todd Oliver	James & Amy Rosborough
Linda Martinez	Sharon Oosterman	Timothy Rowe
Linda Mendonsa	Theresa & Frank Papandrea	Timothy Rowe <i>in Honor of Christopher C. Rowe</i>
Chris Mertens		
Thomas Mertens		

Christopher Rugaard	William Spain	Trimberger Family Foundation <i>in Honor of The Trimberger Family Foundation</i>
The Rugaard Family Living Trust <i>in Memory of Ozzie &amp; Nola Rugaard</i>	Judy Speck <i>in Memory of Jim Speck</i>	Pamela & Alex Tsigdinos
Elizabeth Saint	Judy Speck <i>in Memory of Lloyd &amp; Anne Ghiselli</i>	Kimberly Uberti
Anne & Jeff Schnaubelt	Tom & Sue Sperry	Paul & Sharon Van Iderstine
Steve & Jan Schonhaut	Patrice Sprogis	Ken Venis <i>in Honor of Memphis Jerome Venis</i>
Susan Schrader	Denise Stahlbusch	Kimberly Warren
Lesley & James Schroder	Jeff & Linda Starr	Scott Wasserman
Lesley & James Schroder <i>in Honor of Jennifer &amp; Michael Suter Family</i>	Inga Starrett	Lee Weber-Koch <i>in Honor of June Towill Brown</i>
Karen Schumann	Layne & Lisa Statner	Lee Weber-Koch <i>in Honor of Chase International</i>
Cliff Schuyler	Stavis Family	Lee Weber-Koch <i>in Honor of Gloria &amp; Paul Levy</i>
Jane Seaman <i>in Honor of Ed Scott &amp; Leslie Seaman</i>	Stephanie Stephens <i>in Honor of John R. Stephens</i>	Alan Welch
Tanya Seidel	Jan Stevens <i>in Honor of Chris Stevens</i>	Mike Wilhelm
John Selix	Lynn Stewart	John & Ellen Whitesell
Roy Shellow	James Stolarski	Mark D. Williams
Jamie & Steve Sidells	Donald & Tracy Stroh	Donald & Alexandra Willoughby
Dale Sigal	Chris Corr Sully	Winetsky Partners
Jo Anne Silber	Jana Sunshine	Andrew Wolf
P. Susan Silveira <i>in Memory of Michael William Silveira</i>	Bill & Patty Tamblyn	Stanley Wolken
P. Susan Silveira <i>in Memory of Miriam M. Silveira</i>	Joseph & Thomasine Tavormina	John Woll
Creighton Skau	David & Erika Taxin	Ira & Eleanor Wong
Allan Slocum <i>in Honor of Margot &amp; Jerry</i>	Lesle Thomas <i>in Honor of The Robert R. Bush Family</i>	Kendra Wong
Marilyn Smith	Terri & Doug Thompson <i>in Memory of Greg Kinch</i>	Cay & Greg Woodson
Winifred Smith	Laurie Thoms	Ed & Anne Wustefeld
Betsy & Jim Smrha	Diane Thornton	Margaret Yost
Carol & Jim Snodgress	Lee Ann Toney	Cliff Young
Cindy & Grant Soremekun	Gwen Davis Toso	Erwin & Stephanie Young



# FRIENDS OF TAHOE DONORS

**\$10,000+**

Anonymous  
James Goetz  
Peter & Ginnie Haas;  
The San Francisco Foundation  
Michael &  
Mary Ann Hasenstab  
Hazel Foundation  
Stephen T. Hearst  
Mathewson Charitable  
Lead Trust One  
Robert & Cindy Pester

**\$5,000+**

George & Suzy Bull  
Matt Day;  
W.M. Keck Foundation  
Wendy E. Jordan;  
The San Francisco Foundation  
JPMorgan Chase & Co.  
Larson Charitable Fund  
Robert S. & Dorothy J. Keyser  
Foundation  
Larry Sevison; Berkshire  
Hathaway Energy  
Wes & Stacie Smith  
Jeff & Deborah Weber

**\$1,500-\$4,999**

Ascent Environmental  
Barbara L. & Richard C. Barrett  
Foundation

Big Blue Adventure  
Elizabeth & Olof Carmel  
David & Susan Doyle  
Richard Ferris  
Michael & Bonnie Hope  
Chris Mann  
Native to This Place  
Wes Sperry  
The Maxfield Foundation  
Thomas & Stacey Siebel  
Foundation

**\$500-\$1,499**

Kathie Bartlett  
Michele Battaini  
Kathleen & Douglas Bauer  
Susan Benson  
John Bowers  
Brigham Family Fund  
Julia Nickles Bryan  
The Byrne Family Fund  
Harry & Janet Chapman  
Sydney Coatsworth  
Cynthia Courtney  
Debbie Day  
Rodney Diehl  
Anne Donahoe  
John Dovala  
Roger & Carol Dreyer

Joanne Ehly  
James Gaither, Jr  
John & Patricia Garamendi  
Stephen & Linda Gill  
Douglas & Debra Highsmith  
The Hirsch & the  
Carson Family  
Asher Hochberg  
Rick Holden  
James Horowitz  
Allen & Tina Iftiger  
Michael & Laura Janssen  
Terrell Jones  
Jake & Misty Knight  
Ralph & Eliana Kuhn  
Melodi Blanton & Joanne  
Marchetta  
Sally Mars Carey; Mars Family  
Charitable Foundation  
Noel McCarthy  
& June McCarthy Ennis  
Aramie & Kevin McDonald  
Michael & Karen Melarkey  
Michael & Jeanne E. Milligan  
Beth & Scott Minick  
James Nelson  
Blake Patton  
John & Heidi Piper  
Carole Polito

Jim & Marianne Porter  
Ken Powell  
Gary & Sharon Prosenko  
Patty & Greg Raleigh  
Jim & Joyce Raley Teel  
Brett Robinson  
& Mary Ayuson  
Michael & Carol Sabarese;  
Tahoe Truckee Community  
Foundation  
Michael Sandler  
Phil & Jennifer Satre;  
Community Foundation  
of Western Nevada  
Lawrence & Kerstin Sidney  
Carol & Ned Spieker  
John Stewart  
Clifford & Bonnie Thomson  
Lawrence Tietig  
The Tosh Company  
Steven & Perri Touche  
Samir Tuma & Kriss Deiglmeier  
Stephanie Tyler  
Susan & Evan Unger  
Bill Watson &  
Shireen Piramoon  
Donald Wilkerson  
Michael Wyatt  
Karen Zito & Manuel Calderon

**\$100-\$499**

Tiffany Allen  
Dana Andersen

Benevity Community  
Impact Fund  
Bervid Custom Building Inc.  
Big Valley Seed  
Genevieve & Brandon Broll  
James & Molly Butler  
John & Patricia Cahill  
Greg Campbell  
David & Pam Canepa  
David & Joan Cannon  
Kimberly Caringer  
Garth Casaday  
Paul Churchill & Shelly Ross  
Dave & Terice Clark  
Dan & Shawn Copenhagen  
Landau Davidson  
Patricia & Marvin Demoff  
Jonathan Cobb Dickey  
Diprisco Family Fund  
Kerry & Greg Donovan  
Bruce Eisner and Sandy Hill  
Phil Estipular and Micki Napp  
Don Fulda and  
Betty Anderson Fulda  
Peter & Sandy Golze  
Edward & Cornelia Gould  
Thomas Gram  
Randall Greer and  
Jana Waring Greer  
John Gregory  
Michael Hall

Deborah Hansen  
Tom & Mary Ellen Hawkins  
James Hobbs  
Dean & Cynthia Hunt  
Guy Johnson  
Lisa Maria Judge  
James & Caroline Kaplan  
Charles Knuth  
Lamb Partners, LLC  
Eugene Lee  
Jeannette Lejardi and  
Arleigh Sawyer Jr.  
Todd Lemkin  
Maureen Lowe  
Robert Maddox III  
Richard & Caroline Matera  
McClintock Accountancy  
Tom Mertens and  
Barbara Krause  
Kenneth & Lindsey Meyersieck  
Midkiff & Associates, Inc  
Michael Morgan  
Peter Moyer  
Ward & Donna Nelson  
Network for Good  
Deborah Nicholas  
John Nino  
Steve Noll and  
Stephanie Grigsby  
Greg Novak  
Ted Owens

Kurt Paulson  
Jason Payne  
Clyde & Jane Perlee  
Tess Peterson  
Max & Stacey Pray  
Ken & Gayle Riley  
Stephanie Tamayo-Rivera  
& Ronald Rivera  
Pierre Robert  
Paul & Cookie Rork  
Katherine Sanders  
Robert Sawyer  
Harold Schmitz and  
Elizabeth Parle-Schmitz  
Eric Senesi  
Roy & Eva Shellow  
Carol & Jim Snodgress  
Stephanie Stephens  
Andrew & Kathy Strain  
Stricker Family  
Charitable Fund  
Tracy & Donald Stroh  
Adele & Blaine Swint  
Tahoe Lyfe  
Michael & Karen Traynor  
Lesley Tuggle  
Celestine & John Tugwell  
John Walker  
Kathleen Watty  
Kris Wells  
Wells Fargo Community  
Support Campaign (DoTopia)

Tim & Terri Wolfe  
Adam & Veronica Wolff  
Kelly York and Bruce Wright  
Lawrence & Deborah Young  
Erwin & Stephanie Young

**\$10-\$95**

Gail Baker  
Bruce Barsook  
Bronwyn Brunner  
Christine & John Burns  
Michael & Donna Butcher  
Owen Christie and  
Claire Pyburn-Christie  
CNA Worldwide Operations  
Harriet Cummings  
Cheryl Desmond  
Dewart's Appraisal Service  
Gavin Feiger  
Dan Finkelstein  
Judy Friedman  
Kenneth Glenn  
Paul & Linda Gojenola  
Scott & Theresa Gronek  
Catherine Hawks  
Kevin Hill and Mary Jo Hill  
Sandy Hogan  
Deb & Tony Howard  
William Kerrigan  
Charles Klinger  
Edward & Victoria Ann Lazear

Kenneth & Jean Loer  
Barbara Longshore  
Courtney Elbe Looney  
Amanda Lundie  
John & Linda Macchi  
Marlene & Terry Marseille  
Rich & Bruce McMillan  
Brenda Milum  
Troy & Stephanie Nunes  
Reed Robinson and  
Reinhild Moeller  
Danielle Roe  
Kathryn Lefevre Schenk  
and Gary Schenk  
Robyn Shields  
David Simonsen DDS Inc.  
Daniel Spilman  
Lila Flory Truett  
Kelly Trumbull  
Jenna & Robert  
Wachtel Pronovost  
Emily Walton  
Katrine Watson  
Martha Welch  
Katie & Michael Wilde  
Carol Yashar

PROJECT DONORS

AIS

Mark & Donna Blum  
Chris Disney  
James Sloves MD

Camp Fire Relief

Kevin & Sheri Marshall

Desolation Trail Restoration

Emily Allen  
Neil, Jill, Brandon & Trevor Barnes  
Steven Blair  
Blake Boles  
Schatzi Boyd  
Steve & Patrice Bruni  
Laurie & Robert Byren  
Debbie & Victor Castello  
William Cobb  
Megan & Ryan Dee  
Dan Dougherty  
Debbie & Roy Elsbernd  
Graham Geiselman  
Cathy Gibb  
Joanne Greenberg

Richard Gulley  
Cindy Gustafson & Wally Auerbach  
Arielle Hall  
Richard Hoffman  
Shane Johnson  
Roger & Vicki Kahn  
Kevin Kjer  
Darcy Kosta  
Jason Kuchnicki  
Charles & Feralee Levin  
Stephen Lind  
Dave Marion  
Sam & Mary-Ellen McMullen  
Donald & Victoria Miller  
Kelley & Wyatt Ogilvy  
Olander Family Foundation  
Steven & Barbara Pulver  
Joyce Raley Teel  
Kate Rappath & Gary Law  
Susan Ray  
Susan Reed  
Julie & Red Regan  
Dave & Liz Ritchie  
Julie Savage; Parasol Tahoe Community Foundation  
Dan Segan

Irene Pamela Shelchuk  
Allan Slocum  
Winifred Smith  
Greg Stanton  
Tracy & Donald Stroh  
Lysbeth Truax  
Tunnel Creek Station  
Felix & Elizabeth Wannenmacher  
Ranson & Norma Webster; Community Foundation of Western Nevada  
Hsian & Luke Winter  
Dean Winter  
Douglas Wood  
Carol & Bill Yeates

Emerald Bay to Stanford Rock

Truckee Tahoe Airport District

Environmental Venture Trust

Bob & Marguerite Hubbard  
Lynn Sandberg

Incline Flume Trail

Christopher Finne  
Derek & Elizabeth Henninger  
Jonathan & Susie Sabin  
Julie Whitesell

Johnson Meadow

Anonymous  
Greg Bergner  
Mark Smith

North Tahoe B&G Club Bikes

Audi Reno-Tahoe Cycling Team  
Scott Gillespie & Maja Thaler  
Barry Golombik & Mary Danahey  
Steve Miller & Maureen Mullarkey-Miller

Kings Beach Trail

Gary & Patti Boxeth; Tahoe Truckee Community Foundation  
Scott Craig  
Todd & Grace Davidson  
Jim Feenstra  
Michael & Bonnie Hope

Ilfeld Family Fund  
Jonathan & Susie Sabin  
Aaron Schafer

Paul Laxalt Memorial

Lindsay Anderson  
Jeanette K Belz Family  
Dana Bennett  
Howard Blomstrom & Cheryl Blomstrom  
Elisa Cafferata  
Capital Strategies LTD  
Kathleen Conaboy & John Bardwell  
S.P. & Mendy Elliott  
Jessica Farrato & Lance L Ferrato  
Matthew M Griffin & Karen Todd  
Riana Durrett, PLLC  
Pamela & Steve Robinson  
Victor Salcido JR & Megan Salcido  
Jodi & Chad Stephens

Sugar Pine Plantings

AT&T Nevada  
Michael Child  
Kim Cox

Jill Harris  
Jan Hughes  
Bill Ramsey  
Kristina Runyen  
Bonnie & Bill Smart  
Virginia Webber  
John Weitlauf

Sugar Pine Reforestation

Martis Fund  
DBB Holdings

Take Care

Jason Burke  
County of El Dorado  
League To Save Lake Tahoe  
John Lin  
Joyce Raley Teel  
Erica Wenger

Taylor Creek Glass Replacement

Tahoe Spirits, INC.



# FINANCIALS

**THE TAHOE FUND** continued to grow a sustainable base for the organization by expanding the Stewardship Circle campaign. The Tahoe Fund continued to maintain investment accounts at Parasol Tahoe Community Foundation for short-term project funds, operating funds and

the long-term maintenance fund for the Incline to Sand Harbor Bike Path. Endowments are also maintained at the Parasol Tahoe Community Foundation and the Tahoe Truckee Community Foundation.

	2019			2018
	without donor restrictions	with donor restrictions	total	total
<b>Assets</b>				
Cash & cash equivalents	\$ 610,775	\$ 213,569	\$ 824,344	\$ 655,786
Beneficial interests in assets held at local community foundations	1,605,477	797,015	2,402,492	2,215,622
Contributions & pledges receivable, net	122,972	425,254	548,226	600,193
Prepaid expenses	4,182	-0-	4,182	4,118
Fixed assets, net	946	-0-	946	1,631
<b>Total Assets</b>	<b>\$ 2,344,352</b>	<b>\$ 1,435,838</b>	<b>\$ 3,780,190</b>	<b>\$ 3,477,350</b>
<b>Liabilities &amp; Net Assets</b>				
<b>LIABILITIES</b>				
Accounts payable	\$ 17,024	\$ -0-	\$ 17,024	\$ 30,002
Accrued liabilities	9,780	-0-	9,780	462
Funds held for others	11,037	-0-	11,037	24,181
<b>Total Liabilities</b>	<b>37,841</b>	<b>-0-</b>	<b>37,841</b>	<b>54,645</b>
<b>NET ASSETS</b>				
Unrestricted	381,034	-0-	381,034	542,173
Without Donor Restrictions-Board designated	1,925,477	-0-	1,925,477	1,169,393
Restricted	-0-	1,435,838	1,435,838	1,711,139
<b>Total Net Assets</b>	<b>2,306,511</b>	<b>1,435,838</b>	<b>3,742,349</b>	<b>3,422,705</b>
<b>Total Liabilities &amp; Net Assets</b>	<b>\$ 2,344,352</b>	<b>\$ 1,435,838</b>	<b>\$ 3,780,190</b>	<b>\$ 3,477,350</b>



# A SPECIAL THANKS TO OUR SPONSORS

---



















PO Box 7124, Tahoe City, CA 96145 • 775.298.0035 • [info@tahoe fund.org](mailto:info@tahoe fund.org) • [www.tahoe fund.org](http://www.tahoe fund.org)